

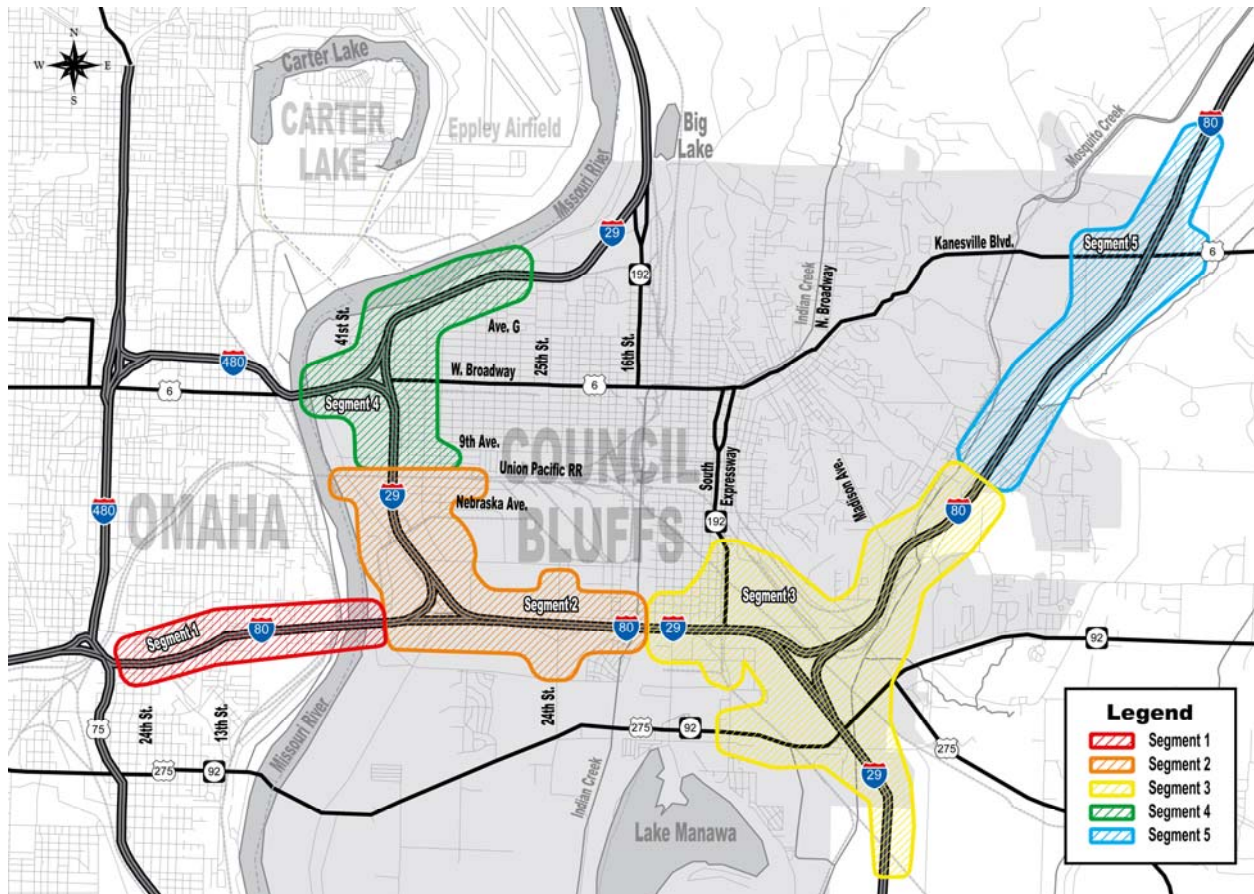
Council Bluffs Interstate System Improvements

Public Information Meeting No. 5 – Aug. 28, 2007



Welcome to the fifth public meeting for the Council Bluffs Interstate System Improvements Project (CBIS Improvements Project) sponsored by the Iowa Department of Transportation (Iowa DOT). The CBIS Improvements Project is a major effort focused on improving the Interstate System in the Council Bluffs metropolitan area.

The overall CBIS Improvements Project is divided into 5 segments as shown in the graphic below. The purpose of this meeting is to provide information and gather public feedback regarding the 24th Street bridge reconstruction and the Aesthetics Master Plan that was developed to guide aesthetic (visual) enhancements for the overall construction project.



CBIS Improvements Project – Project Segments

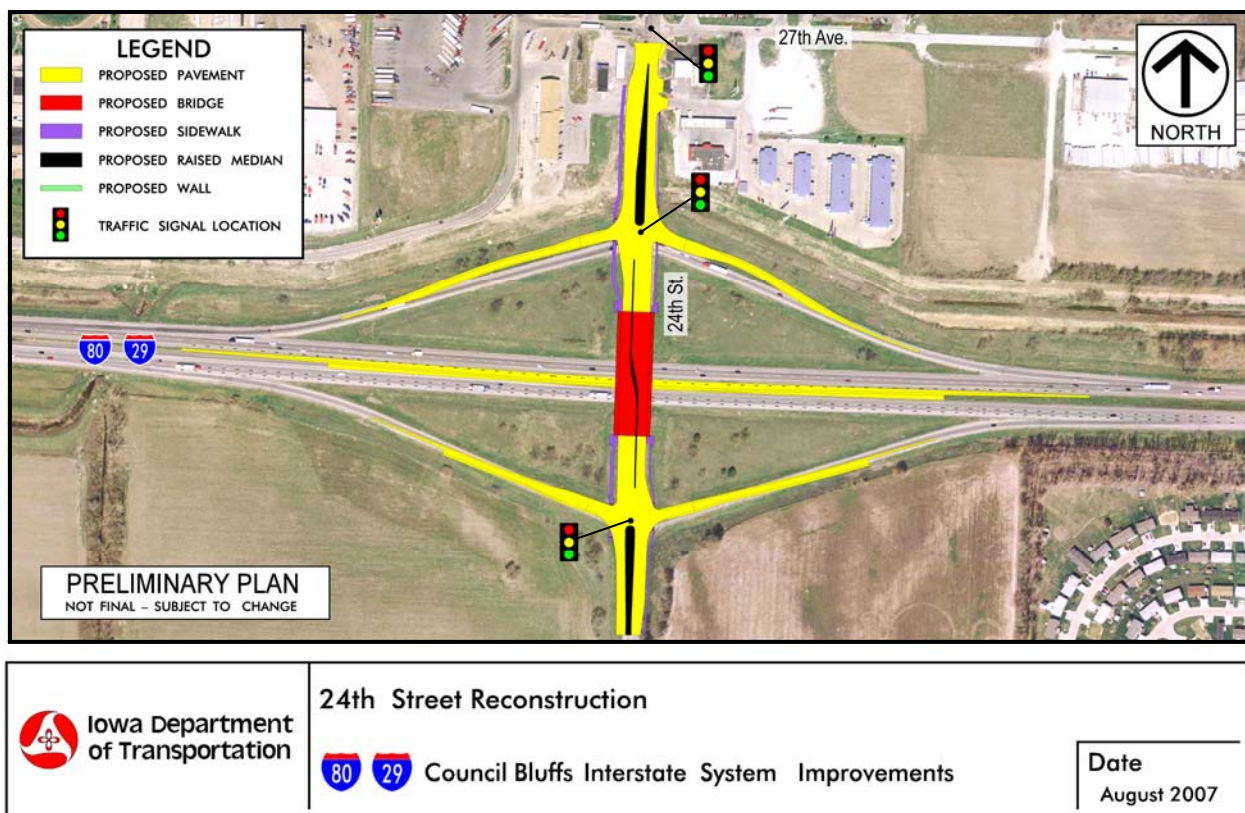
24th Street Construction

Reconstruction of the 24th Street bridge over Interstates 29 and 80 (I-29/I-80) is an early construction project of the CBIS Improvements Project. The bridge is being reconstructed in preparation for full reconstruction of the I-29/I-80 overlap section. The longer and wider bridge will allow for the additional lanes on I-29/I-80 to pass underneath. In addition to reconstruction of the bridge, the project includes reconstruction of 24th Street from 300 feet south of the I-29/I-80 eastbound ramp intersection to just south of 27th Avenue.



The contract letting for the 24th Street project is scheduled for the fall of 2007 and completion is anticipated for the fall of 2008. No new right of way will be acquired for the 24th Street project. Upon completion, 24th Street will include two through lanes in each direction and left-turn lanes at the interstate on-ramps.

Pedestrian access will be available on both sides of the 24th Street bridge. A multi-use trail will be constructed on the west side of 24th Street and a sidewalk will be provided on the east side. The graphic below shows the proposed design for the 24th Street improvements.



The 24th Street bridge will be reconstructed in 3 stages with an initial preparation stage as described below.

Preparation Stage

Initial preparation for construction includes strengthening ramp shoulders and adding temporary pavement along 24th Street and at the ramp intersections that will be used for maintaining traffic in subsequent stages. In addition, new lanes will be constructed to shift I-29/I-80 westbound

traffic toward the median to accommodate the new pier for the 24th Street bridge. Westbound I-29/I-80 traffic will use these new lanes for the duration of construction and beyond.

Stage 1

The new lanes for the southbound 24th Street traffic will be constructed. Traffic will be restricted to one lane in each direction (with left-turn lanes) and will shift to the existing northbound lanes.

Stage 2

The new lanes for the northbound 24th Street traffic will be constructed. Traffic will be restricted to one lane in each direction (with left-turn lanes) and will shift to the new southbound lanes.

Stage 3

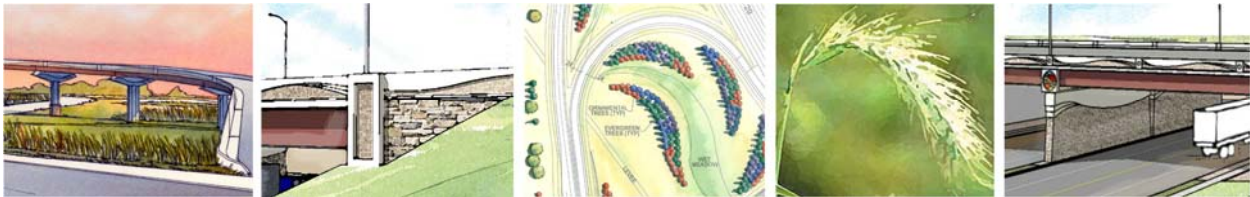
The 24th Street bridge's median section will be constructed. Traffic will be restricted to one lane in each direction (with left-turn lanes).

Overnight Closures

Construction activities will require some overnight closures of I-29/I-80 throughout the duration of the project. During these closures, interstate traffic will be redirected onto the 24th Street ramps. 24th Street traffic will continue to have one lane in each direction (with left-turn lanes) during this period. Portable electronic message signs will be used along the I-29 and I-80 corridors to allow some diversion of interstate traffic from the closure area. During Stage 3, 24th Street will have at least one overnight closure to complete the median section of the bridge.

Western Historic Trails Center Access

Southbound access to the Western Historic Trails Center's main entrance will be maintained throughout construction. Northbound access at the main entrance will also be maintained for the majority of construction; however, short term closures may be required, during which northbound traffic would be rerouted to the entrance off of Richard Downing Avenue.

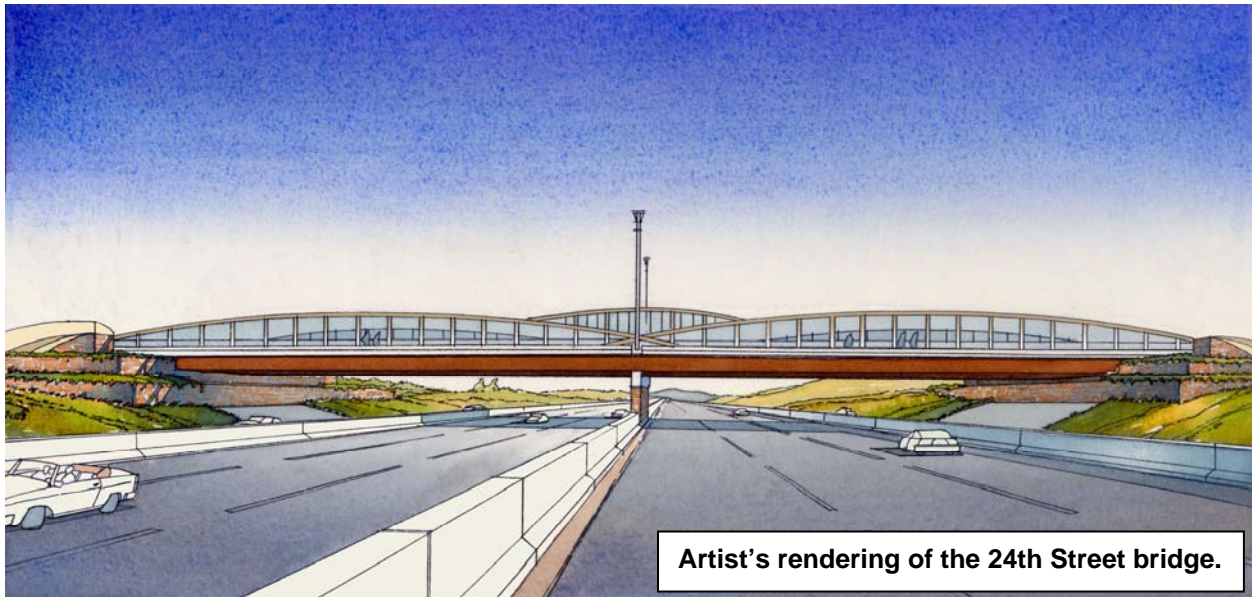


Aesthetics

The Iowa DOT recognizes that the CBIS Improvements Project will be a change to the look of the interstate system and the entrance to Council Bluffs, Iowa. As a result, the plans include limited aesthetic treatments and enhancements as part of the project. Iowa DOT has initiated an Aesthetics Master Plan to guide the visual enhancements and establish a consistent, attractive corridor theme that compliments the character of the existing landscape.

The intent of the Aesthetics Master Plan is to create a cohesive interstate corridor that is attractive and easy to navigate for daily commuters as well as first time visitors. The plan draws heavily on the natural environment including natural curves intended to represent the rolling hills surrounding the city.

The landscape design at 24th Street may blend native and ornamental grasses with trees and perennials to create a layered landscape that distinguishes the bridge as a significant entrance to



Artist's rendering of the 24th Street bridge.

the city while still reflecting the natural setting. The landscape design will be completed under a separate project in the future.

The 24th Street bridge (shown above) is the signature element of the CBIS corridor. Its design is representative of both the natural landscape and contemporary values of the city of Council Bluffs. Opportunities for public art are prominently featured at plazas at the ends of the bridge. The rolling hills are represented in the wall pier and railing. The bridge's abutments and terrace walls include a limestone appearance with warm, natural cream and brown colors.

Iowa DOT is committed to enhancing the visual appeal of the interstate corridor in a way that reflects Council Bluffs' community values and natural assets. By doing so, the Aesthetics Master Plan complements the CBIS Improvements to preserve and enhance the distinctive features that contribute to the quality of life in Council Bluffs. Due to the many transportation needs across the state and the limited availability of funding, the level of enhancements for the Council Bluffs corridor will be dependent on state and local partnerships to provide additional contributions for the enhancements.

Contact Us

If you have a comment, question, or concern regarding the CBIS Improvements Project or would like to be added to the project mailing list, please forward this information on the attached self addressed Citizen Comment form or contact John Carns (information at right).

Additional information regarding the CBIS Improvements Project is available on the project website at: www.cbinterstate.com.

Contact Us 

John Carns
Iowa Department of Transportation
District 4 Office
2210 East 7th St.
Atlantic, IA 50022
Ph. 712-243-3355
Iowa Toll Free Ph. 800-289-4368
e-mail: cbinterstate@dot.iowa.gov

www.cbinterstate.com