



# CONTRACTOR'S MEETING AND PROGRAM UPDATE – 11/20/13

Presented by :

Council Bluffs Interstate Program

PM/GEC Team

# AGENDA

---



- » Welcome
- » Program Overview
- » New Programmatic Approach
- » Current Funding / Contracting Alternatives
- » Construction Specifications
- » Upcoming Construction
- » Communications and Public Relations
- » Questions and Discussion

# PROGRAM OVERVIEW

# PROGRAM OVERVIEW



- » Today's meeting is intended to continue the dialogue with DOT partners that will work to implement this important interstate improvement program.
- » Iowa DOT is in the process of reconstructing I-80, I-29, and I-480 in the Council Bluffs metropolitan area.
- » This comprehensive interstate redesign will modernize the highway system and improve mobility and safety of approximately 18 miles of interstate.



# PROGRAM OVERVIEW

---



- » Multi-Year Iowa DOT Study and Design Process
- » Major Long-Term Investment
- » Stemmed from 1999 Needs Study

# PROGRAM OVERVIEW



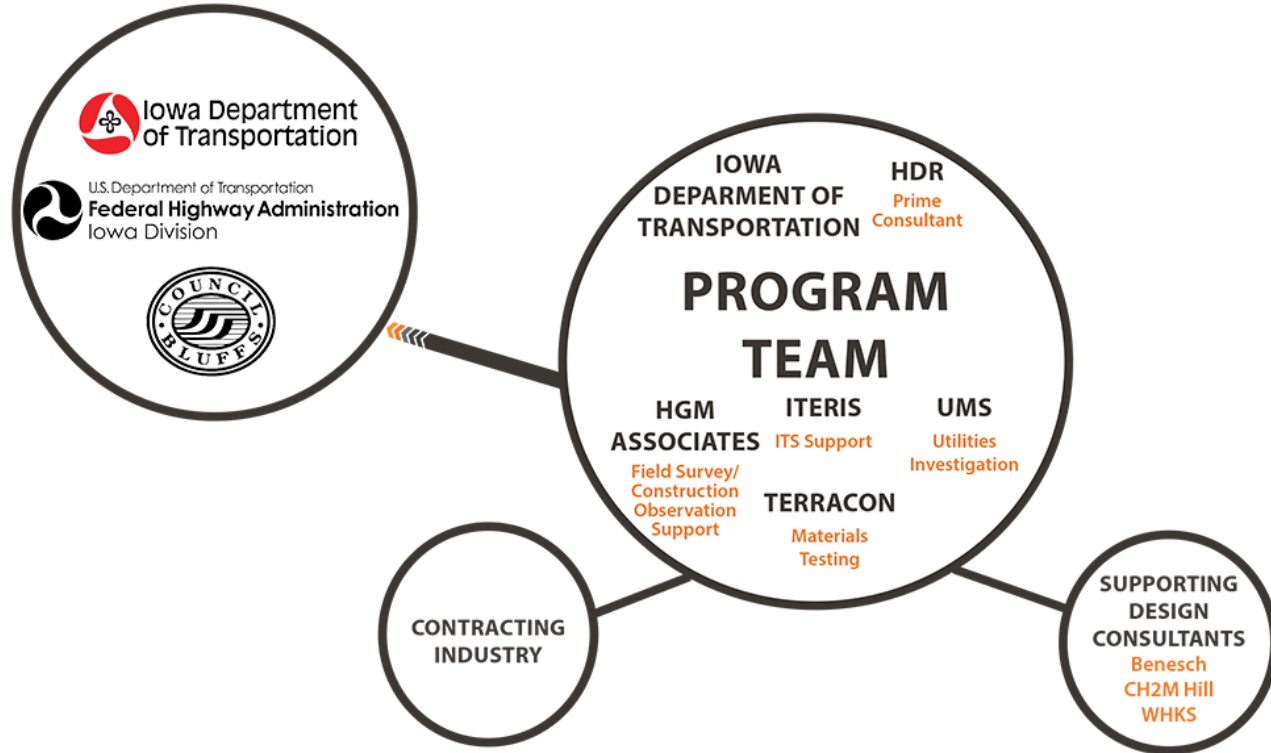
# PROGRAM OVERVIEW

---



- » Current Funding (2014 – 2018) - \$444.2 M committed to the program
- » Future Funding - \$900M planned for the program

# COUNCIL BLUFFS INTERSTATE SYSTEM - PROGRAM TEAM





# NEW PROGRAMMATIC APPROACH

# PURPOSE OF A PROGRAMMATIC APPROACH

---



Managing large transportation infrastructure improvement programs requires a programmatic approach to:

- » Effectively set priorities
- » Efficiently allocate resources
- » Identify and mitigate risks
- » Communicate with diverse stakeholders across multiple projects

# ADVANTAGES OF A PROGRAMMATIC APPROACH

---



## Program Management Provides:

- » Programmatic tools for project controls
- » Proactive budget and schedule management
- » Dedicated team whose sole focus is program delivery
- » Team supplements DOT's staff and resources as needed
- » Provides consistency across all segments/contract packages

# CURRENT FUNDING / CONTRACTING ALTERNATIVES

# CURRENT FUNDING

---



- » Since 2008 we have let \$130 million in projects
- » To meet the program goal we need to let approximately \$100 million a year through 2023

# CONTRACTING ALTERNATIVES

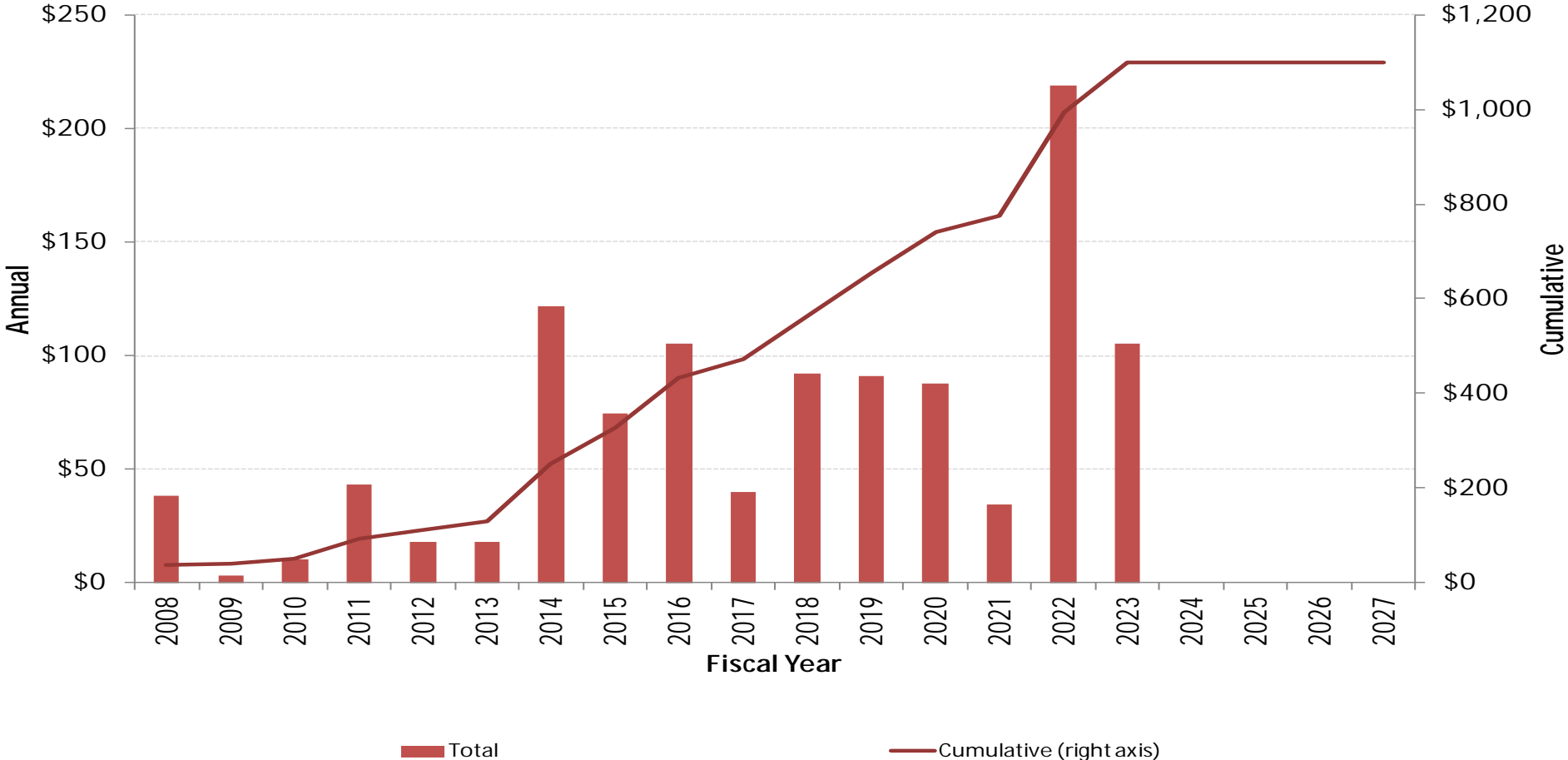
---



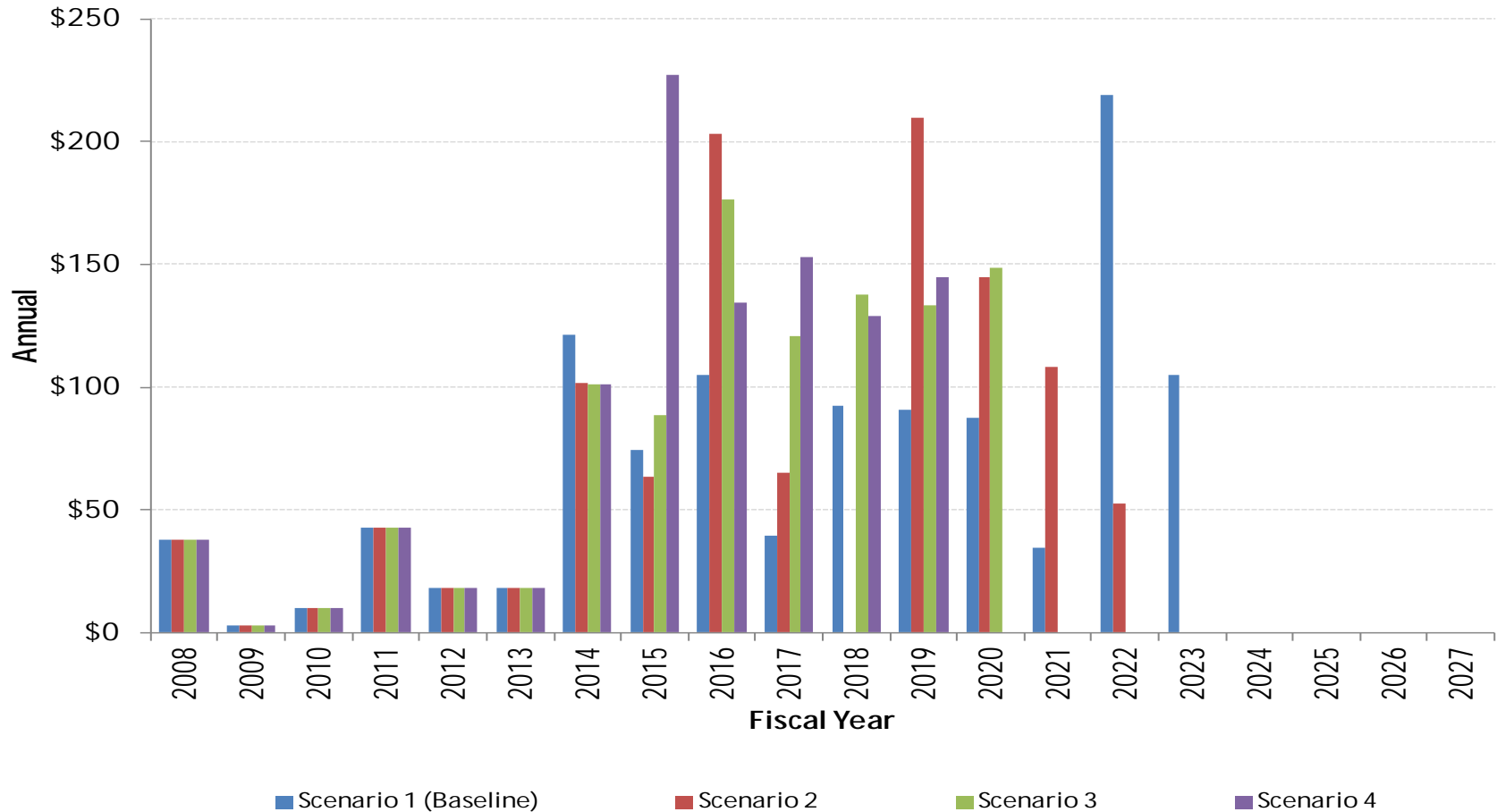
## Contracting Scenarios

- » Baseline scenario is based on the current funding guide
- » Developed alternatives for more efficient and accelerated program delivery

# Scenario 1 (Baseline) Letting Cash Flow in Escalated YOE Dollars

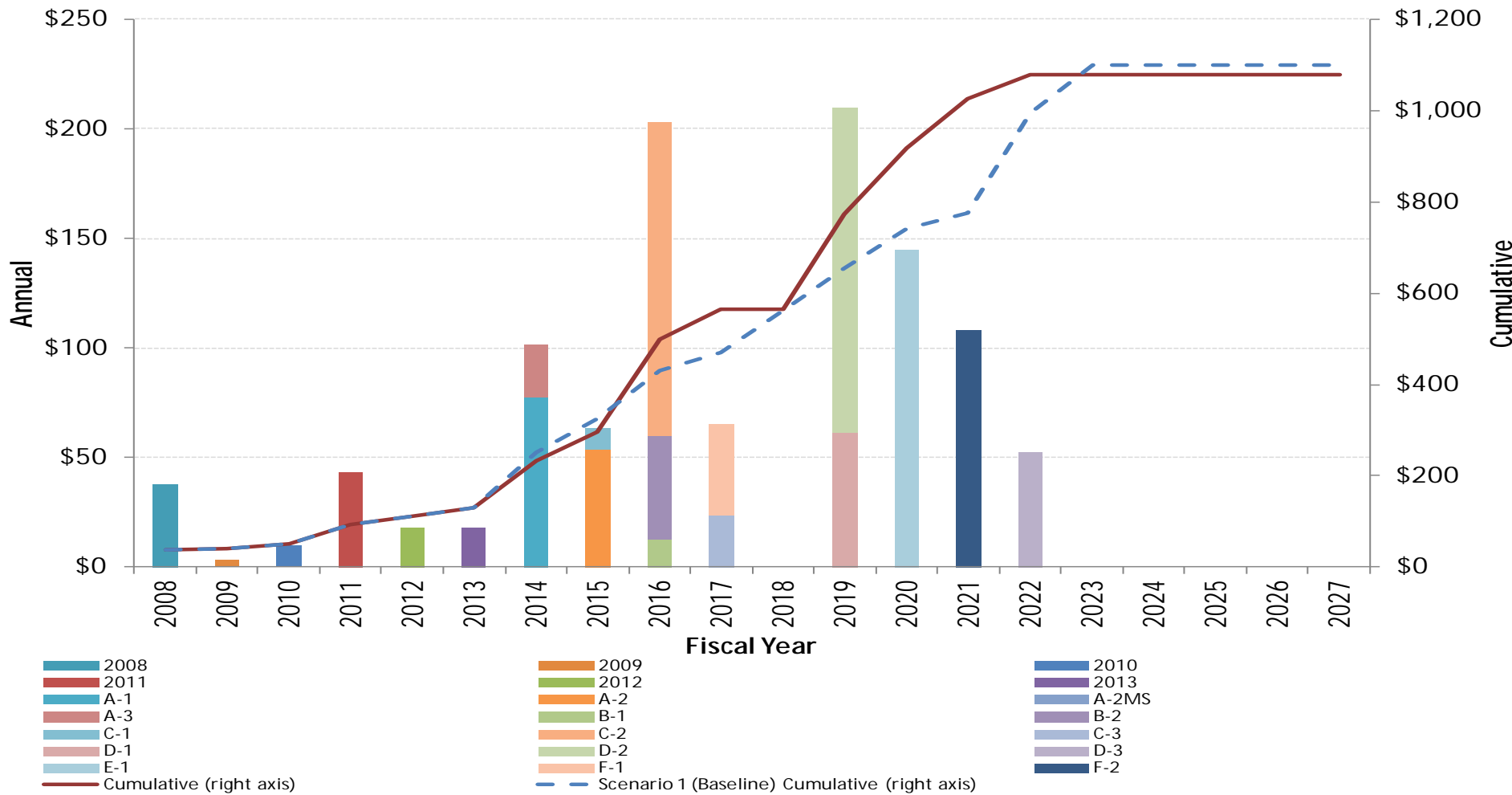


# Letting Cash Flow in Escalated YOE Dollars

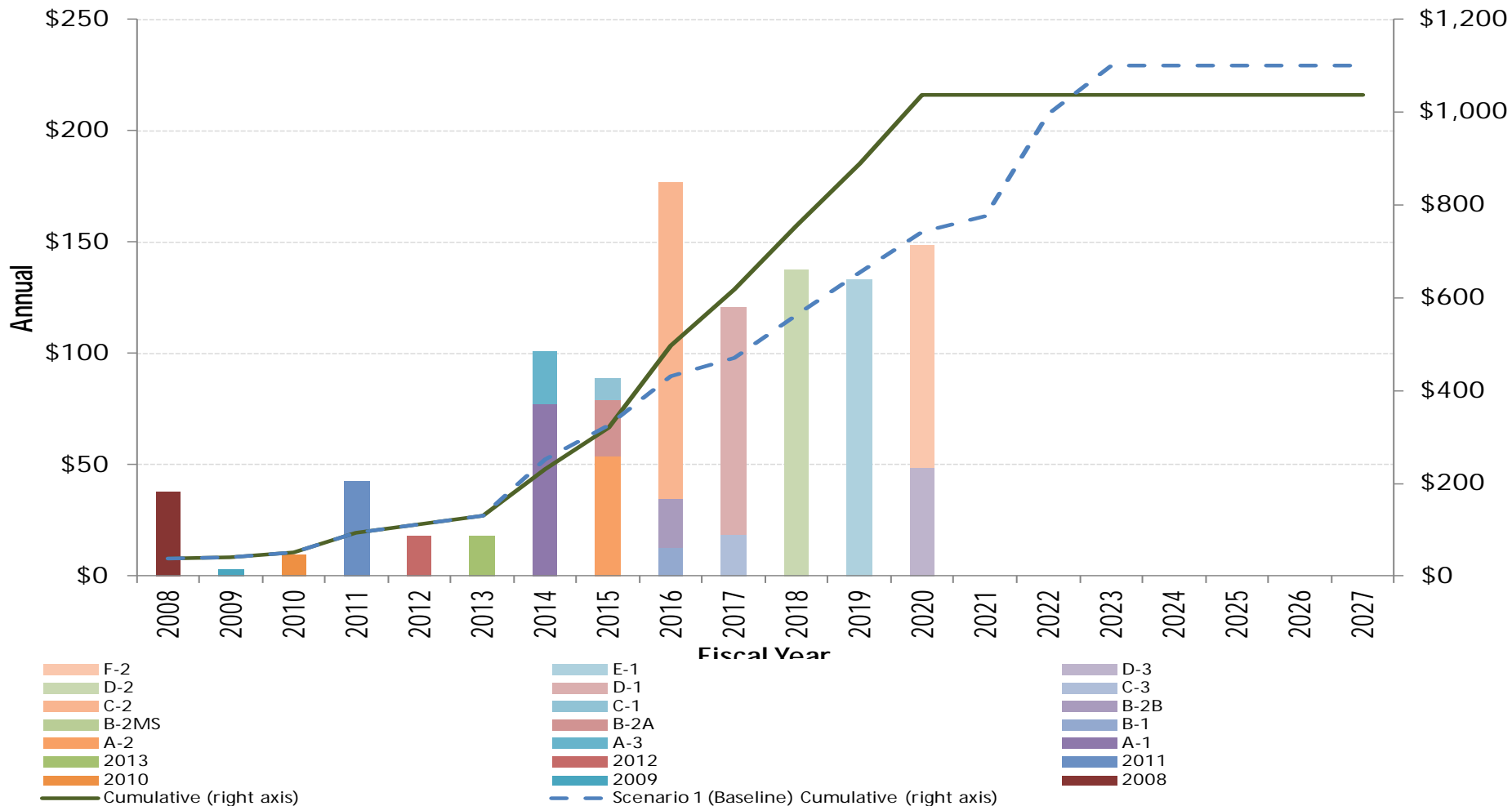




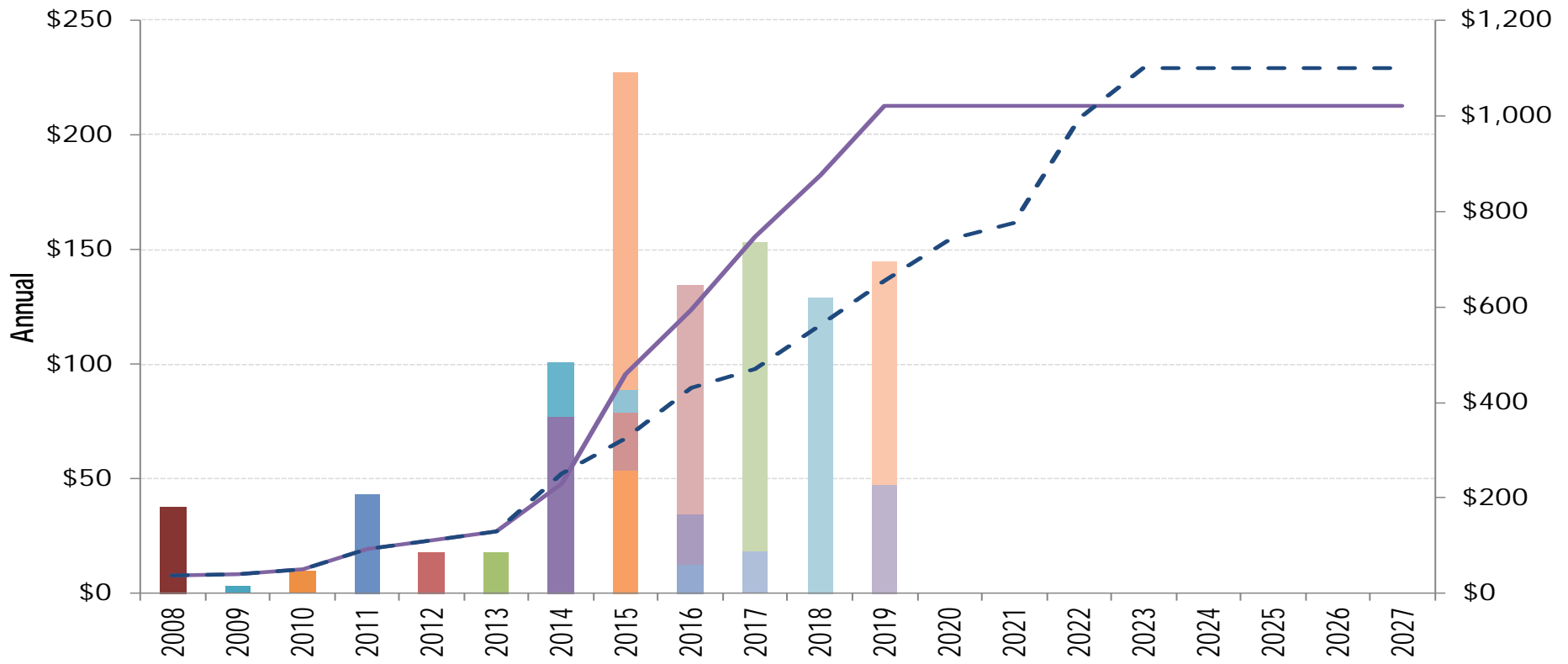
# Scenario 2 Letting Cash Flow in Escalated YOE Dollars



# Scenario 3 Letting Cash Flow in Escalated YOE Dollars



# Scenario 4 Letting Cash Flow in Escalated YOE Dollars



- |   |   |   |
|---|---|---|
| <span style="color: #FF9966;">■</span> F-2                    | <span style="color: #ADD8E6;">■</span> E-1  | <span style="color: #9966CC;">■</span> D-3  |
| <span style="color: #90EE90;">■</span> D-2                    | <span style="color: #D2B48C;">■</span> D-1  | <span style="color: #ADD8E6;">■</span> C-3  |
| <span style="color: #FF9966;">■</span> C-2                    | <span style="color: #ADD8E6;">■</span> C-1  | <span style="color: #9966CC;">■</span> B-2B |
| <span style="color: #90EE90;">■</span> B-2MS                  | <span style="color: #D2B48C;">■</span> B-2A   | <span style="color: #4169E1;">■</span> B-1  |
| <span style="color: #FF9966;">■</span> A-2                    | <span style="color: #ADD8E6;">■</span> A-3  | <span style="color: #9966CC;">■</span> A-1  |
| <span style="color: #90EE90;">■</span> 2013                   | <span style="color: #D2B48C;">■</span> 2012   | <span style="color: #4169E1;">■</span> 2011 |
| <span style="color: #FF9966;">■</span> 2010                   | <span style="color: #00CED1;">■</span> 2009   | <span style="color: #8B0000;">■</span> 2008 |
| <span style="color: purple;">—</span> Cumulative (right axis) | <span style="color: blue;">- - -</span> Scenario 1 (Baseline) Cumulative (right axis) |   |

# CONSTRUCTION SPECIFICATIONS – CPM SPECIAL PROVISION

# CONSTRUCTION SPECIFICATIONS – CPM SPECIAL PROVISION

---



Why is Iowa DOT including this Special Provision?

- » Program Demands
- » Planning and Management Tool for Iowa DOT
- » Communication to the Public

# CONSTRUCTION SPECIFICATIONS – CPM SPECIAL PROVISION

---



## What's New?

- » Pre-Construction Scheduling Conference
- » Cost-Loading
- » Baseline Schedule
- » Monthly Schedule Update – Tied to Payment
- » Training
- » Issues to Coordinate with Other Specifications

# UPCOMING CONSTRUCTION

# UPCOMING CONSTRUCTION

---



## US 275 – Letting Spring 2014

- » 450,000 CY of earthwork; 640,000 FT of rigid inclusions; 97,000 FT of wick drains
- » NB and SB bridges for I-29 over Mosquito Creek
- » US 275 WB bridge over Mosquito Creek
- » US 275 WB bridge over I-29





Proposed  
Wastewater  
Treatment  
Plant  
Location  
and  
Footprint  
Approximate  
Location  
of  
Existing  
Wastewater  
Treatment  
Plant  
Location  
of  
Existing  
Wastewater  
Treatment  
Plant  
Location  
of  
Existing  
Wastewater  
Treatment  
Plant

Proposed  
Wastewater  
Treatment  
Plant  
Location  
and  
Footprint

Proposed  
Wastewater  
Treatment  
Plant  
Location  
and  
Footprint

Proposed  
Wastewater  
Treatment  
Plant  
Location  
and  
Footprint

Proposed  
Wastewater  
Treatment  
Plant  
Location  
and  
Footprint

Proposed  
Wastewater  
Treatment  
Plant  
Location  
and  
Footprint

Proposed  
Wastewater  
Treatment  
Plant  
Location  
and  
Footprint



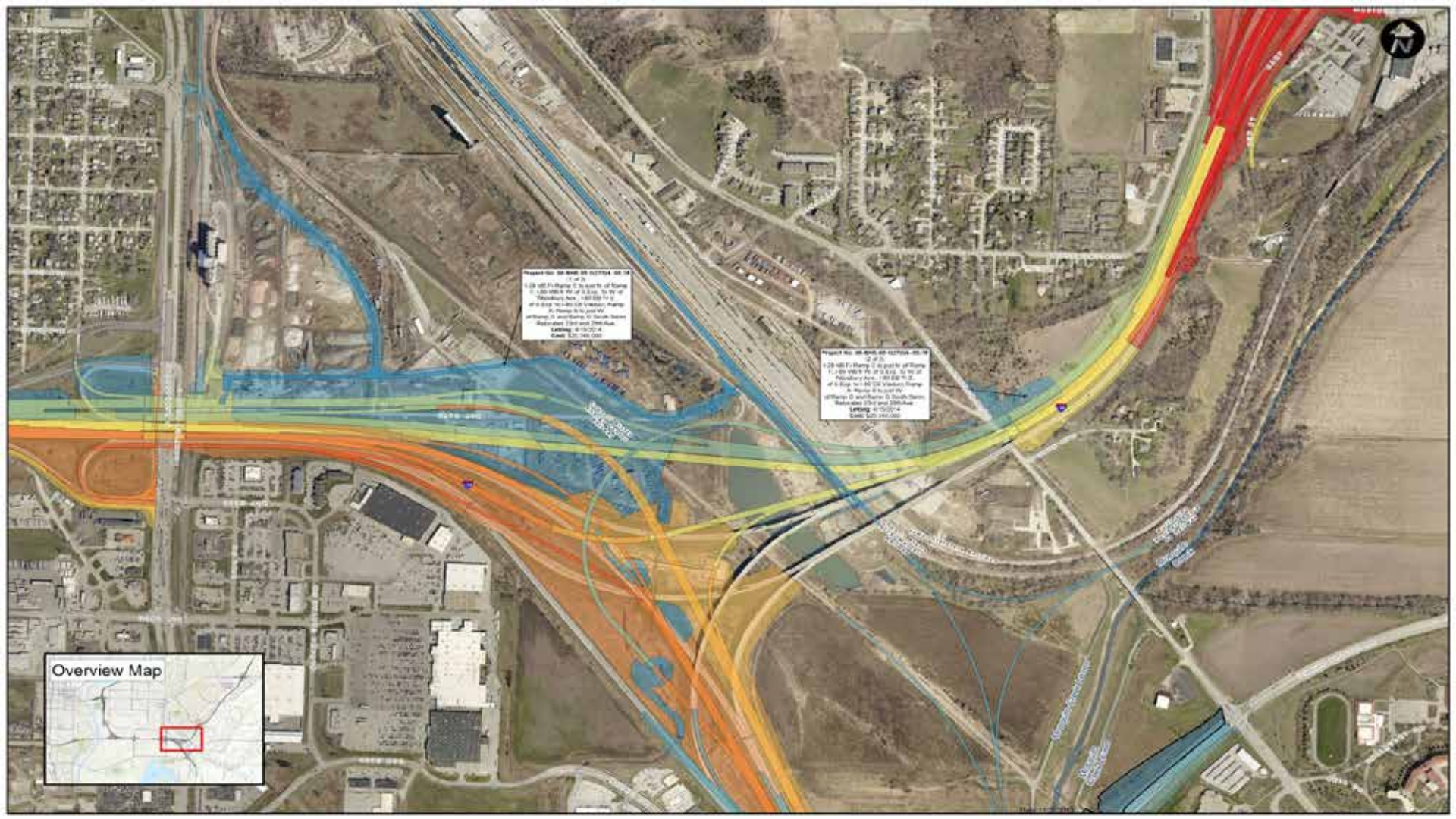
# UPCOMING CONSTRUCTION

---



## (370) Package, Letting Spring 2014

- » 1.4M CY of earthwork
- » 1.3M FT of wick drains
- » 60,000 FT of rigid inclusions



Project No. 08-0405-00-037504-00-04  
 -2 of 3-  
 1.08 HRT Fl. Range: 0 to 400 cfs of Storm  
 1.00 HRT Fl. of 1.0 day. To 1% of  
 Watershed Area. 1.00 HRT Fl. of  
 400 cfs. No. 400 cfs. Volume Range  
 of Storm: 0 to 400 cfs. South Street  
 Reservoir 1.00 and 2.00-day.  
 Lining: 0 to 200 ft.  
 Cost: \$20,000,000

Project No. 08-0405-00-037504-00-04  
 -2 of 3-  
 1.08 HRT Fl. Range: 0 to 400 cfs of Storm  
 1.00 HRT Fl. of 1.0 day. To 1% of  
 Watershed Area. 1.00 HRT Fl. of  
 400 cfs. No. 400 cfs. Volume Range  
 of Storm: 0 to 400 cfs. South Street  
 Reservoir 1.00 and 2.00-day.  
 Lining: 0 to 200 ft.  
 Cost: \$20,000,000



# COMMUNICATIONS AND PUBLIC RELATIONS



Proactive Public Relations Planning that requires coordination:

- » Weekly traffic impact planning and coordination
- » Coordination with PR staff on look-ahead schedule and impacts

# QUESTIONS OR COMMENTS

[info@councilbluffsinterstate.com](mailto:info@councilbluffsinterstate.com)