



A portion of the relocated railroad southeast of the East System Interchange

### PROJECT DESCRIPTION

The Railroad Relocation project consolidated the CBEC Railway and BNSF Railway railroad operations into a new common corridor west of Mosquito Creek under I-29 and Iowa 92. Construction occurred between 2015 and 2016. This improves operations at the South Expressway Interchange and greatly reduces roadway/railway conflicts by consolidating railroad corridors and eliminates numerous at-grade rail crossings and the CBEC Railway corridor that bisected Lewis Central High School. Improved railroad operations allow select BNSF Railway trains to bypass Council Bluffs.

The Railroad Relocation project is a part of the U.S. 275/Iowa 92 Interchange project. Please refer to the U.S. 275/Iowa 92 Interchange project for a description of the larger project.

### PROJECT SCHEDULE

**Construction:** 10/2015–01/2017

### BENEFITS



Consolidated railroads into a common corridor

Reduces roadway/railway conflicts



Eliminated several at-grade rail crossings

### FOR MORE INFORMATION

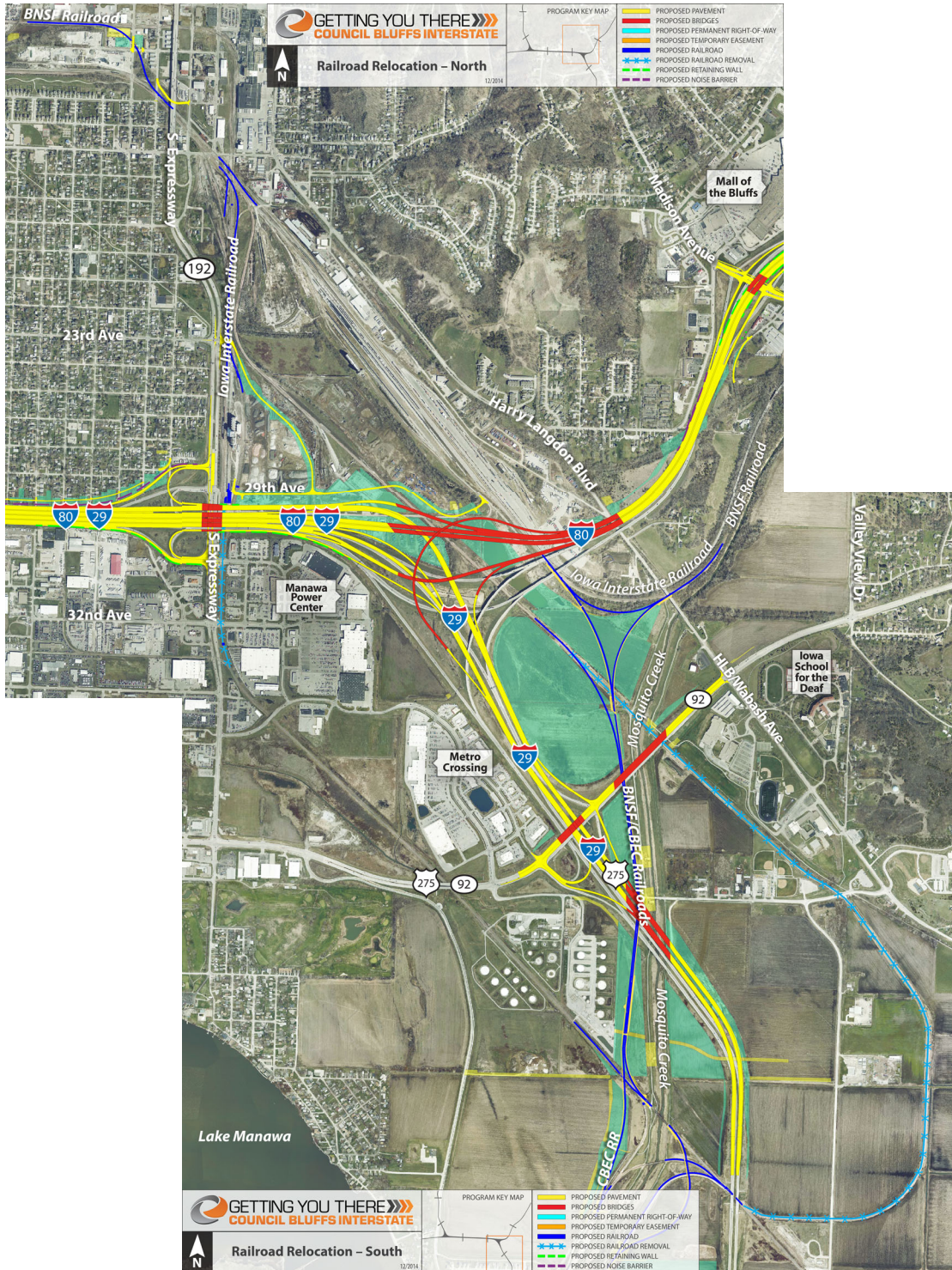
Wendy Thompson  
Public Information Officer  
712.216.3339  
Wendy.Thompson@  
CouncilBluffsInterstate.com

# RAILROAD RELOCATION

Council Bluffs, IA



## PROJECT MAP



1751 Madison Avenue, Suite 750 • Council Bluffs, IA 51503 • 712.216.3339  
www.CouncilBluffsInterstate.IowaDOT.gov • info@CouncilBluffsInterstate.com



Federal and state laws prohibit employment and/or public accommodation discrimination on the basis of age, color, creed, disability, gender identity, national origin, pregnancy, race, religion, sex, sexual orientation, or veteran's status. If you believe you have been discriminated against, please contact the Iowa Civil Rights Commission at 800-457-4416 or Iowa Department of Transportation's affirmative action officer. If you need accommodations because of a disability to access the Iowa Department of Transportation's services, contact the agency's affirmative action officer at 800-262-0003.