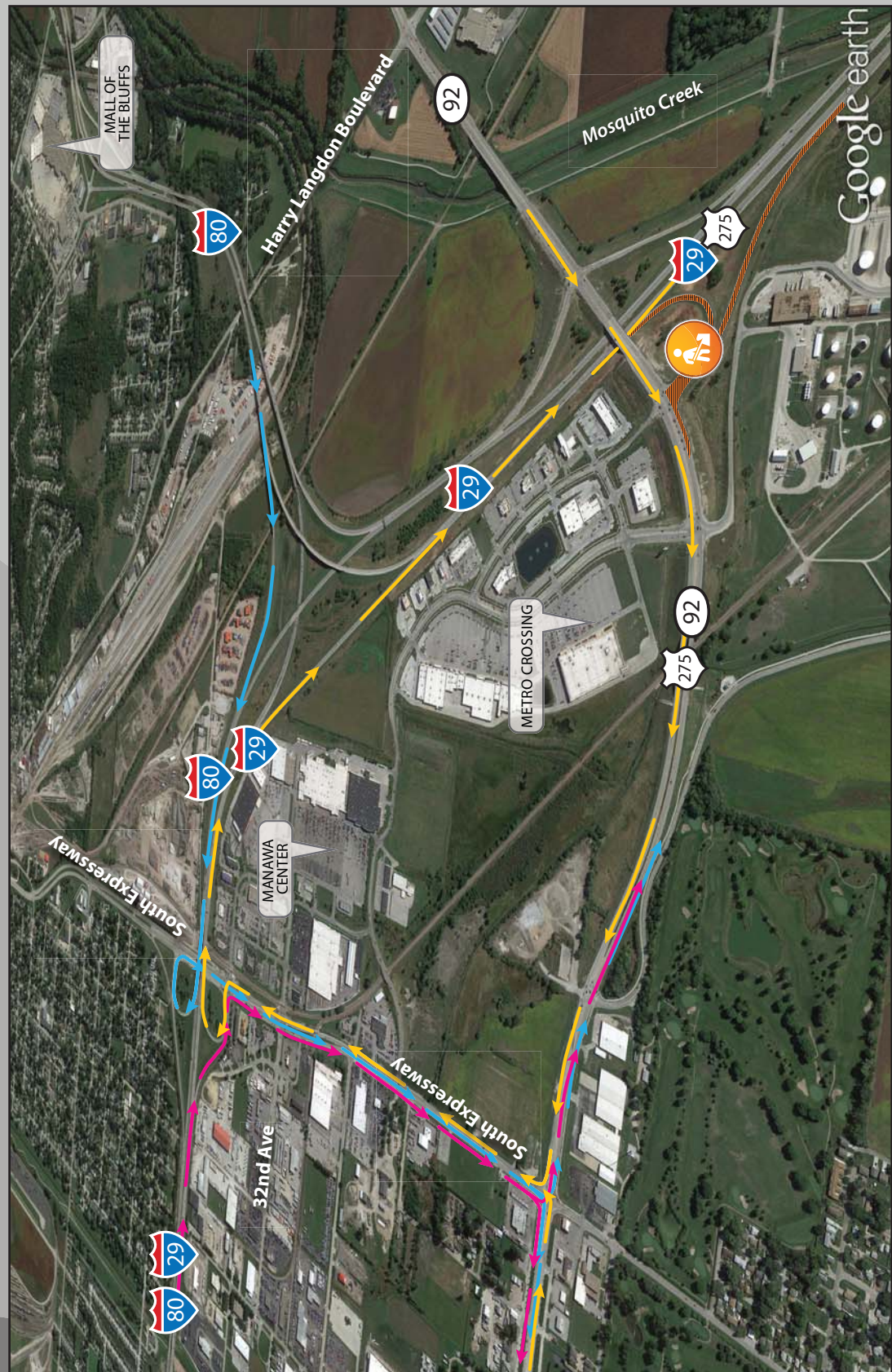


FIVE-AND-A-HALF-MONTH CLOSURE OF SOUTHBOUND I-29 RAMPS

The on and off ramps will be closed at the same time. A marked detour will direct I-29 southbound travelers needing to access U.S. 275/Iowa 92 to the South Expressway exit.



CONSTRUCTION AREA

ROADWAY CLOSURE

U.S. 275/IOWA 92 TO I-29 SOUTHBOUND DETOUR

I-29 SOUTHBOUND TO U.S. 275/IOWA 92 DETOUR

I-80 TO U.S. 275/IOWA 92 DETOUR



GETTING YOU THERE
COUNCIL BLUFFS INTERSTATE

Council Bluffs Interstate System Improvement Program

2016 Detours for I-29 Southbound Ramps at U.S. 275/Iowa 92 (Approximately 5.5 Months)

I-29 AND U.S. 275/IOWA 92 INTERCHANGE PROJECT

KEY FEATURES

- Reconstruction of I-29 between Metro Drive and Harry Langdon Boulevard
- New roadways, walking trails, bridge structures and other features
- Consolidation of railroad operations into a common corridor

BUSINESS MATTERS

Stay informed! We have tools and resources to keep you and your patrons moving during construction.

- Program website
- Email and text alerts
- Program newsletter
- Program resources to display in your business or organization

VISIT THE PROGRAM WEBSITE:
www.CouncilBluffsInterstate.IowaDOT.gov

FOLLOW US ON SOCIAL MEDIA:

[f](#) [t](#) [i](#) [YouTube](#) [g+](#)

SIGN UP FOR TRAFFIC ALERTS:
Submit your contact information on our website: www.CouncilBluffsInterstate.IowaDOT.gov/contact

VISIT THE PROGRAM OFFICE:
Mall of the Bluffs
1751 Madison Avenue, Suite 750
Council Bluffs, IA 51503
Members of the public are welcome anytime during business hours, Monday through Friday. Enter on the east side of the Mall; parking is located on the east side of the Dillard's Clearance Store.

EMAIL US:
info@CouncilBluffsInterstate.com

CALL US: 712.216.3339

Reconstruction of the I-29 and U.S. 275/Iowa 92 interchange is scheduled to begin in June 2014. Travelers will experience ramp closures, two-way traffic with one lane in each direction for two and a half years on U.S. 275/Iowa 92, traffic delays and detours as a result of the project. Proposed construction consists of new roadways, walking trails, bridge structures and other features including the removal of existing bridges and portions of the existing roadway. Six bridges will be reconstructed, including I-29 northbound and southbound over Mosquito Creek; Iowa 92 eastbound and westbound over Mosquito Creek; and U.S. 275/Iowa 92 eastbound and westbound over I-29.

The project will also include the consolidation of railroad operations into a new common corridor west of Mosquito Creek under I-29 and Iowa 92.

The project construction area covers I-29, south of U.S. 275/Iowa 92 to just north of the U.S. 275/Iowa 92 ramps, and US 275/Iowa 92 east- and westbound from Metro Drive to Harry Langdon Boulevard, including the I-29 and U.S. 275/Iowa 92 interchange.

This construction is part of the Council Bluffs Interstate System Improvement Program, a streamlined approach to planned construction projects on I-80, I-29, and I-480 in the Council Bluffs/Omaha metropolitan area.

FREQUENTLY ASKED QUESTIONS

Will the interchange reconstruction affect traffic flow that is bound for Metro Crossing, local schools and other nearby destinations?

The Iowa DOT wants to make sure you have access to the places you want to go during construction. Therefore, for the duration of the project, there will always be two-way traffic on U.S. 275/Iowa 92 that provides access to local businesses and schools. However, traffic will be reduced to one lane in each direction.

Ramp closures represent a significant impact; why does the DOT have to close the ramps?

The new I-29 ramps are being reconstructed in a new location and at a higher elevation as part of this reconstruction project. These two factors require that the ramps close temporarily.

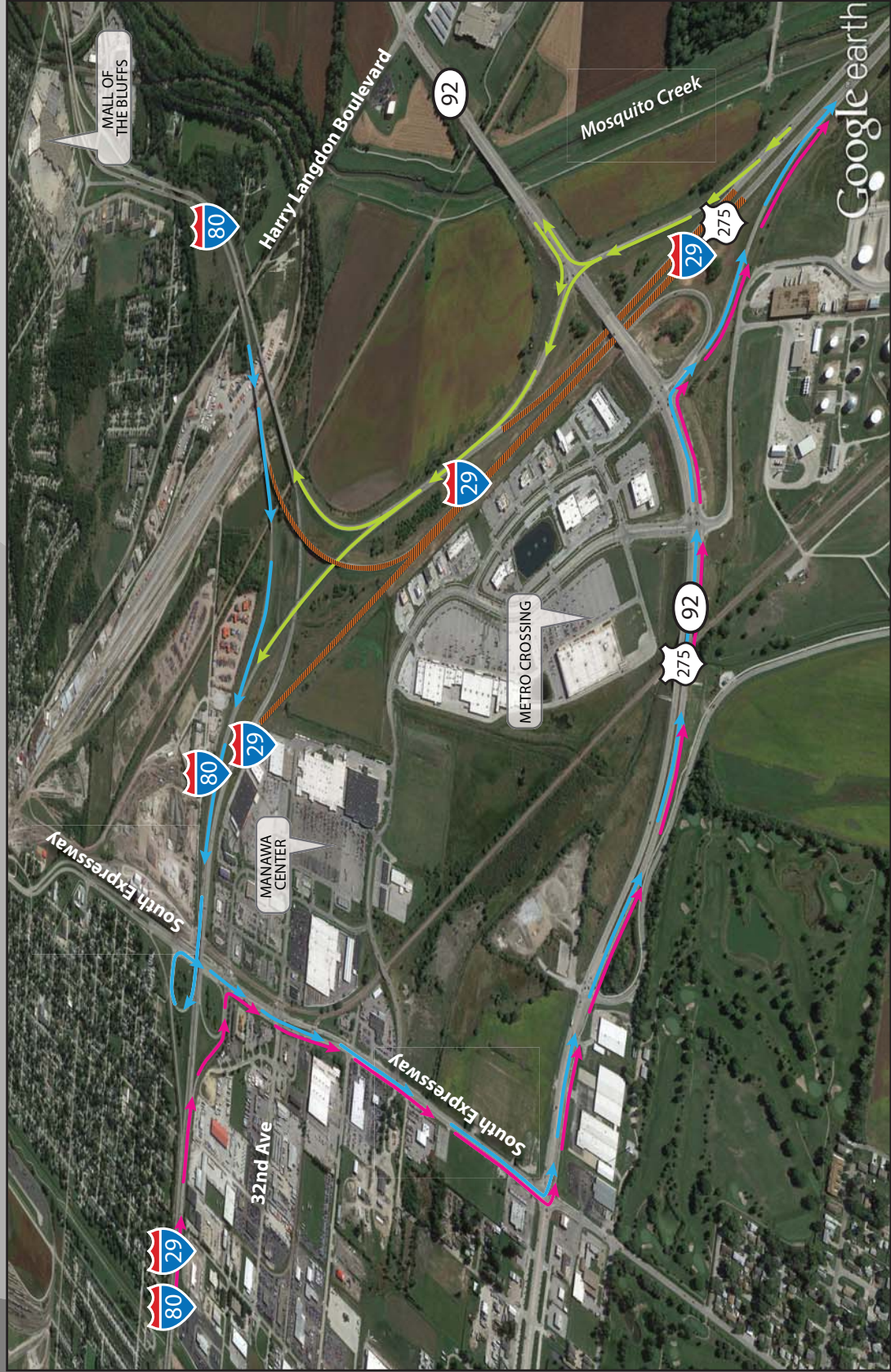
The Council Bluffs Interstate System Improvement Program schedule shows that construction will occur through 2022; why does the U.S. 275/Iowa 92 information show construction completing in 2016?






While the construction contracts for the U.S. 275/Iowa 92 interchange last through 2016, there are additional projects in this vicinity that will reconstruct the east system interchange; the dual, divided freeway; and the Madison Avenue interchange that will last through 2022.

2014-2015 DETOURS

TEMPORARY AND INFREQUENT OVERNIGHT CLOSURE OF I-29

When a closure is required, northbound I-29 traffic will be detoured to the U.S. 275 on and off ramps. Southbound traffic will be detoured to the South Expressway. Southbound and northbound lanes of I-29 will not be closed at the same time.



 CONSTRUCTION AREA
 ROADWAY CLOSURE
 I-29 NORTHBOUND DETOUR
 I-29 SOUTHBOUND DETOUR
 I-80 TO I-29 SOUTHBOUND DETOUR

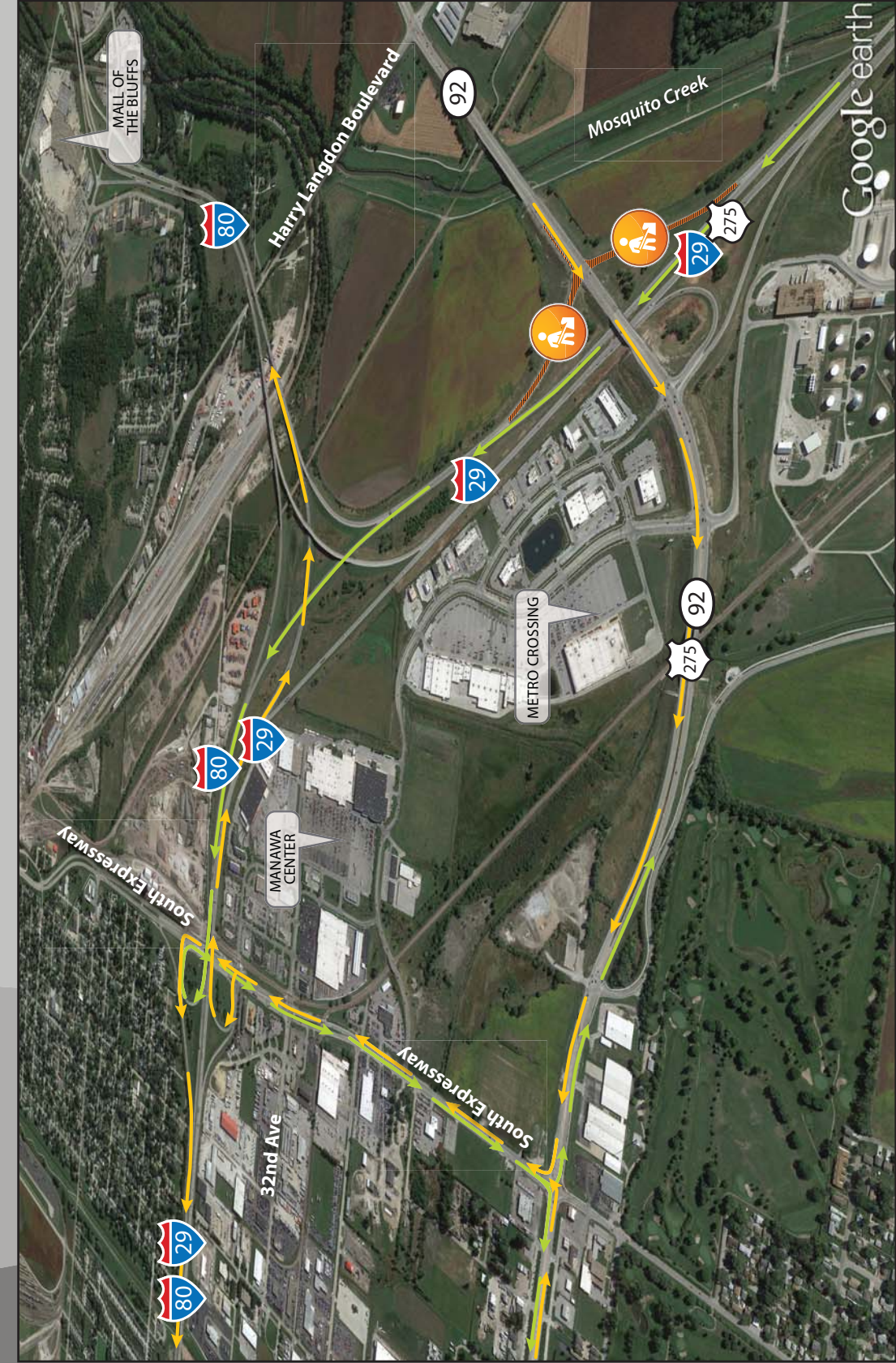


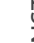



 **GETTING YOU THERE**
COUNCIL BLUFFS INTERSTATE
 Council Bluffs Interstate System Improvement Program
2014-2015 Detours for Temporary Overnight Closures of I-29; U.S. 275/Iowa 92 Remains Open

2015-2016 DETOURS

THREE-MONTH CLOSURE OF NORTHBOUND I-29 RAMPS

The on and off ramps will not be closed simultaneously. A marked detour will direct I-29 northbound travelers needing to access U.S. 275 to the South Expressway exit. Each ramp will be closed for approximately three months.



 CONSTRUCTION AREA
 ROADWAY CLOSURE
 I-29 NORTHBOUND TO U.S. 275/IOWA 92 DETOUR
 U.S. 275/IOWA 92 TO I-29 NORTHBOUND/I-80 DETOUR



 **GETTING YOU THERE**
COUNCIL BLUFFS INTERSTATE
 Council Bluffs Interstate System Improvement Program
2015-2016 Detours for I-29 Northbound Ramps at Iowa 92 (Approximately 3 Months)