

The purpose of this meeting is to:

- » Provide an update on the Council Bluffs Interstate System Improvement Program
- » Discuss the 2015 construction schedule
- » Give details on potential construction impacts and detours in the area

PROGRAM OVERVIEW

PROGRAM GOALS



Modernize
18 miles
of interstate



Accommodate
planned development
along the Corridors



Reduce traffic
congestion



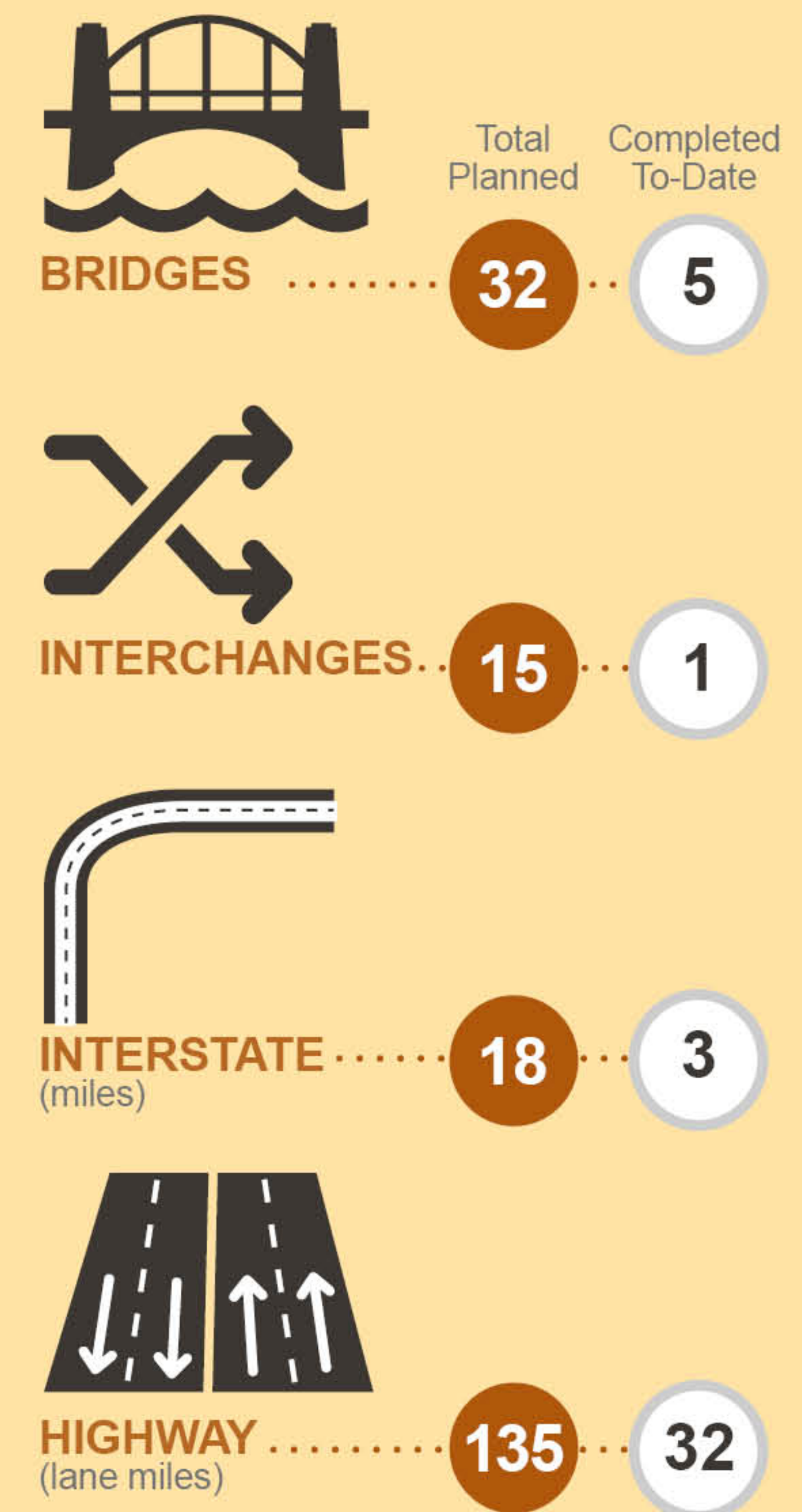
Improve the
visual landscape



GETTING YOU THERE COUNCIL BLUFFS INTERSTATE

- Active Construction Projects
(Currently scheduled for the next 10 years.)
- Completed Projects
- Future Projects

PROGRAM PROGRESS



*PROJECT MARKERS ARE REPRESENTATIONAL AND DO NOT ENCOMPASS FULL PROJECT AREAS.

IOWA DOT'S LARGEST HIGHWAY FUNDING EFFORT

NEXT 8 YEARS = **\$912** MILLION

Iowa will invest nearly the same amount of money they have allocated from 2008 to 2014 for every year moving forward

SPENT/UNDER CONSTRUCTION

\$130
MILLION

\$140
MILLION

\$523
MILLION
COMMITTED

\$389
MILLION
PLANNED

2008

2014

2015

2020

2023

2014 IN REVIEW

BY THE NUMBERS

The Council Bluffs Interstate System Improvement Program has been active since 2008. These statistics give a snapshot of work completed in 2014.

The I-29 northbound ramp during construction

 **209,000**
Square feet of bridge deck poured

 **720,000**
Hours worked

 **3,000**
Linear feet of retaining wall

 **5,000**
Tons of structural steel for bridges

14
Lane-miles of completed lanes



 **10,000**
Linear feet of pipe

 **78,000**
Cubic yards of bridge concrete poured

 **2,000**
Linear feet of noise wall

3,000
Tons of reinforced steel

 **71**
Storm drains

 **1,000,000**
Cubic yards of earthwork moved

 **400**
Construction workers

EAST SYSTEM INTERCHANGE

Reconstruction of the East System Interchange will address capacity needs, improve safety and correct functional design issues.

Project highlights will include:

- » Reconstruction to allow for the straightening of the I-80 alignment.
- » Elevation of highway segments to improve efficiency.
- » Reduction of necessary lane changes.
- » Elimination of I-29 left-hand entrance and exit ramps.

Construction began in summer 2014 and will be completed in summer 2021.



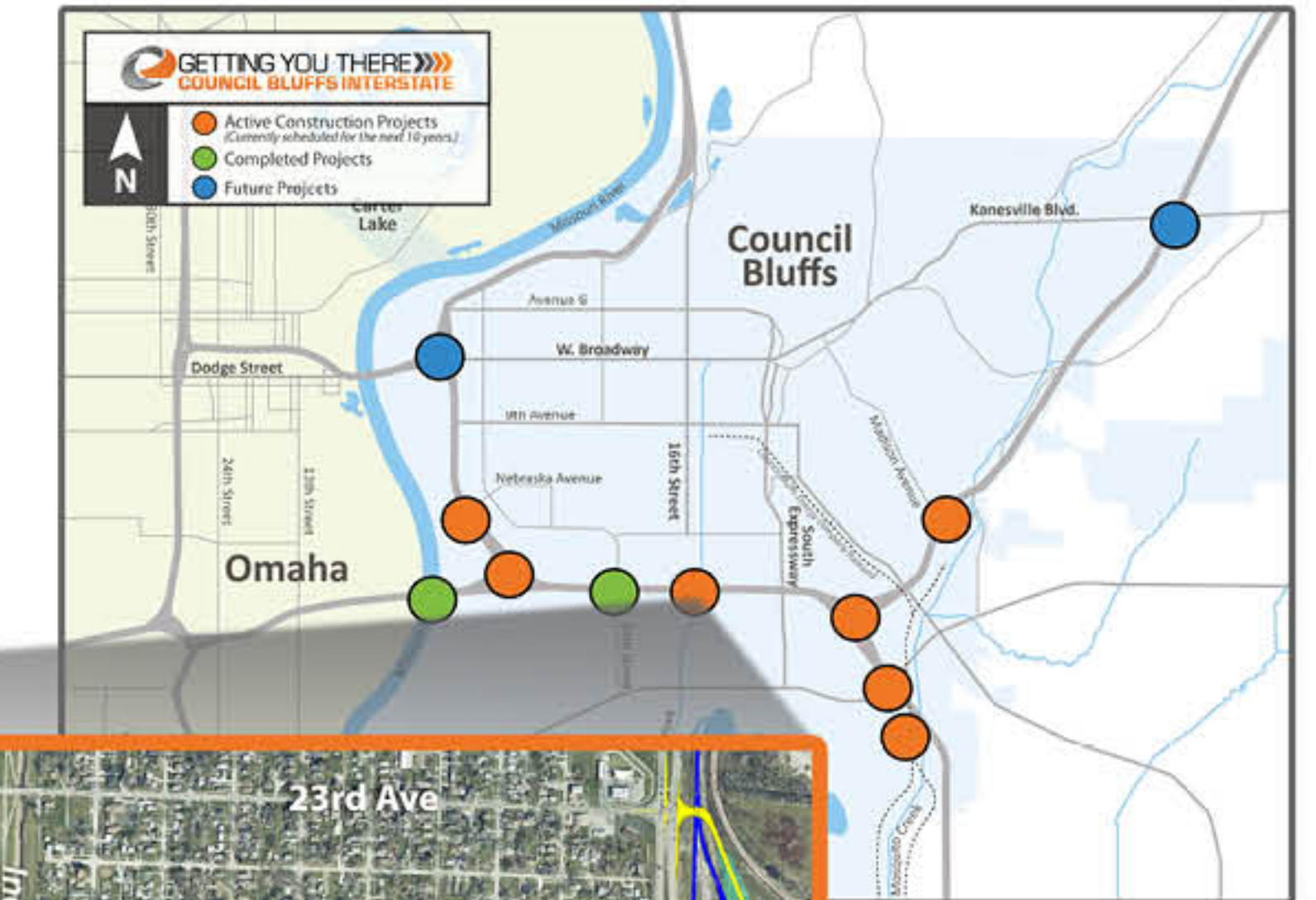
I-80/I-29 DUAL, DIVIDED FREEWAY

The dual, divided freeway will improve the overall efficiency of the transportation network.

Project highlights will include:

- » Separation of through traffic on I-80 from traffic on I-29 destined for Council Bluffs.
- » Creation of an I-80 express and an I-29/I-80 local by constructing four separate roadways (two in each direction).

Construction is anticipated to be completed in summer 2021.



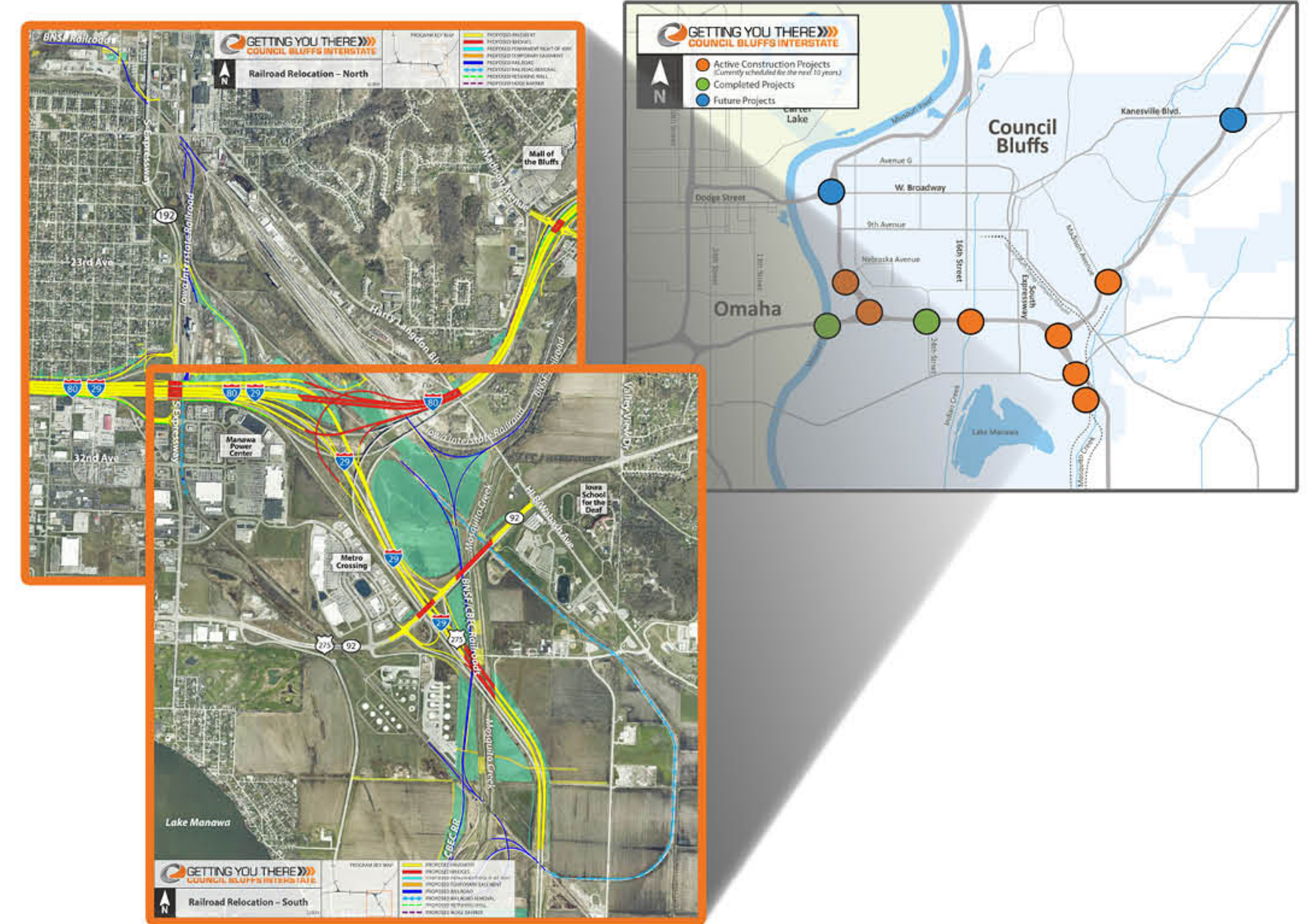
RAILROAD RELOCATION

The Railroad Relocation project consolidates the CBEC and BNSF railroad operations into a new common corridor west of Mosquito Creek under I-29 and IA 92.

Project highlights include:

- » Improvement to operations at the South Expressway interchange.
- » Reduction of roadway/railway conflicts.
- » Elimination of numerous at-grade rail crossings and the CBEC corridor that bisects Lewis Central High School.
- » Provision of more efficient railroad operations, allowing select BNSF trains to bypass Council Bluffs.

Construction is anticipated to take place from fall 2015 until summer 2017.



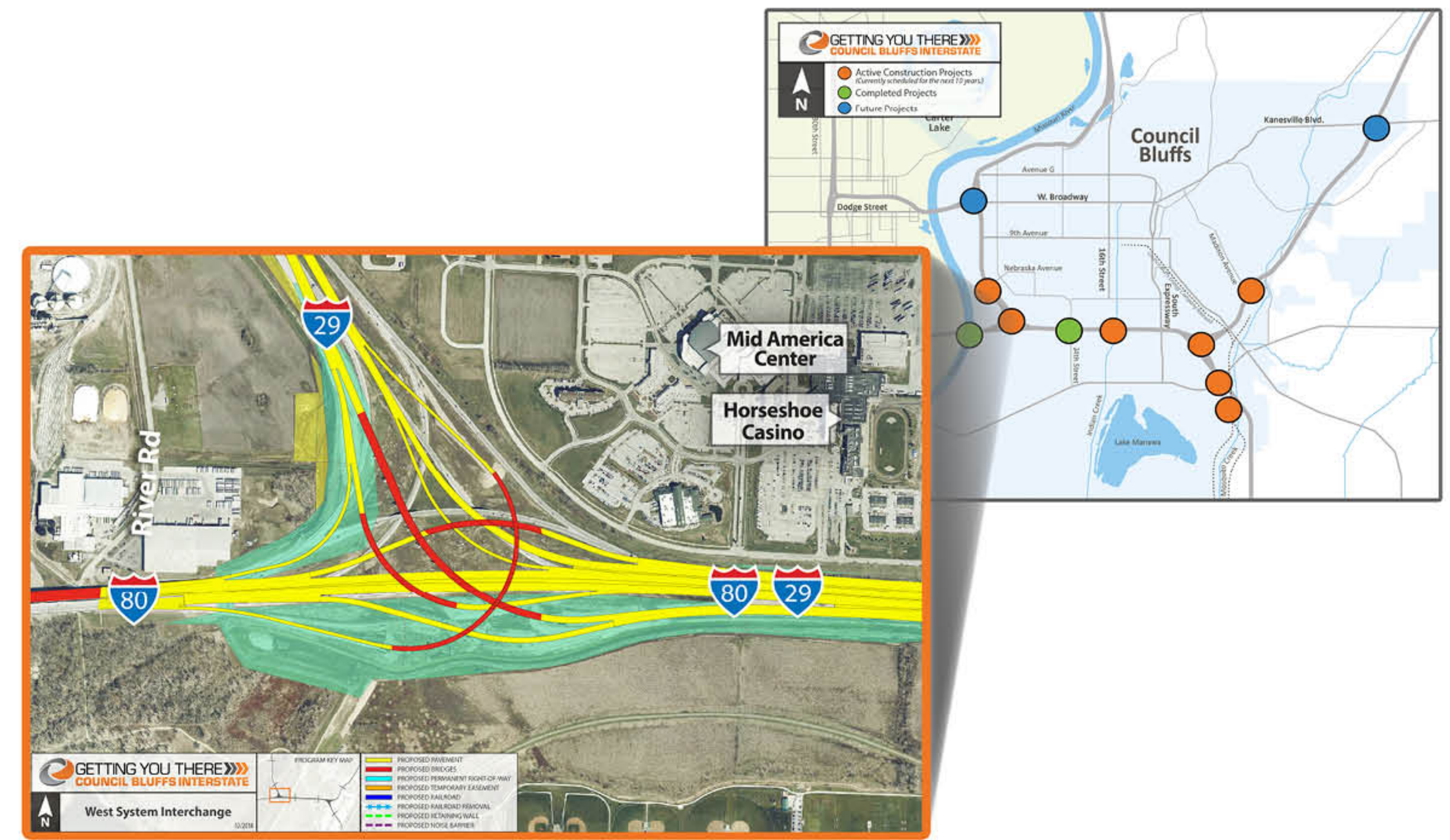
WEST SYSTEM INTERCHANGE

The West System Interchange project will provide for efficient and safe vehicle movement on both I-29 and I-80 systems.

Project highlights include:

- » An increase in the number of travel lanes for both I-80 and I-29.
- » Reduction of necessary lane changes.
- » Construction of a new overpass and surface-level highway lanes.
- » Dedicated lanes for through I-80 westbound traffic.
- » Elimination of I-29 left-hand entrance and exit ramps to I-80.

Construction is anticipated to be completed in 2019.



U.S. 275/IOWA 92 INTERCHANGE

The U.S. 275/Iowa 92 Interchange project will replace aging bridge and highway infrastructure, bringing it up to current design standards, and accommodate the consolidation of railroad lines.

Project highlights include:

- » Consolidation of railroad operations into a common corridor.
- » Construction of new roadway embankments, walking trail and bridge structures.
- » Removal and reconstruction of six bridges.

Construction began in summer 2014 and will be completed in fall 2019.



NEBRASKA AVENUE INTERCHANGE/ UNION PACIFIC RAILROAD BRIDGE

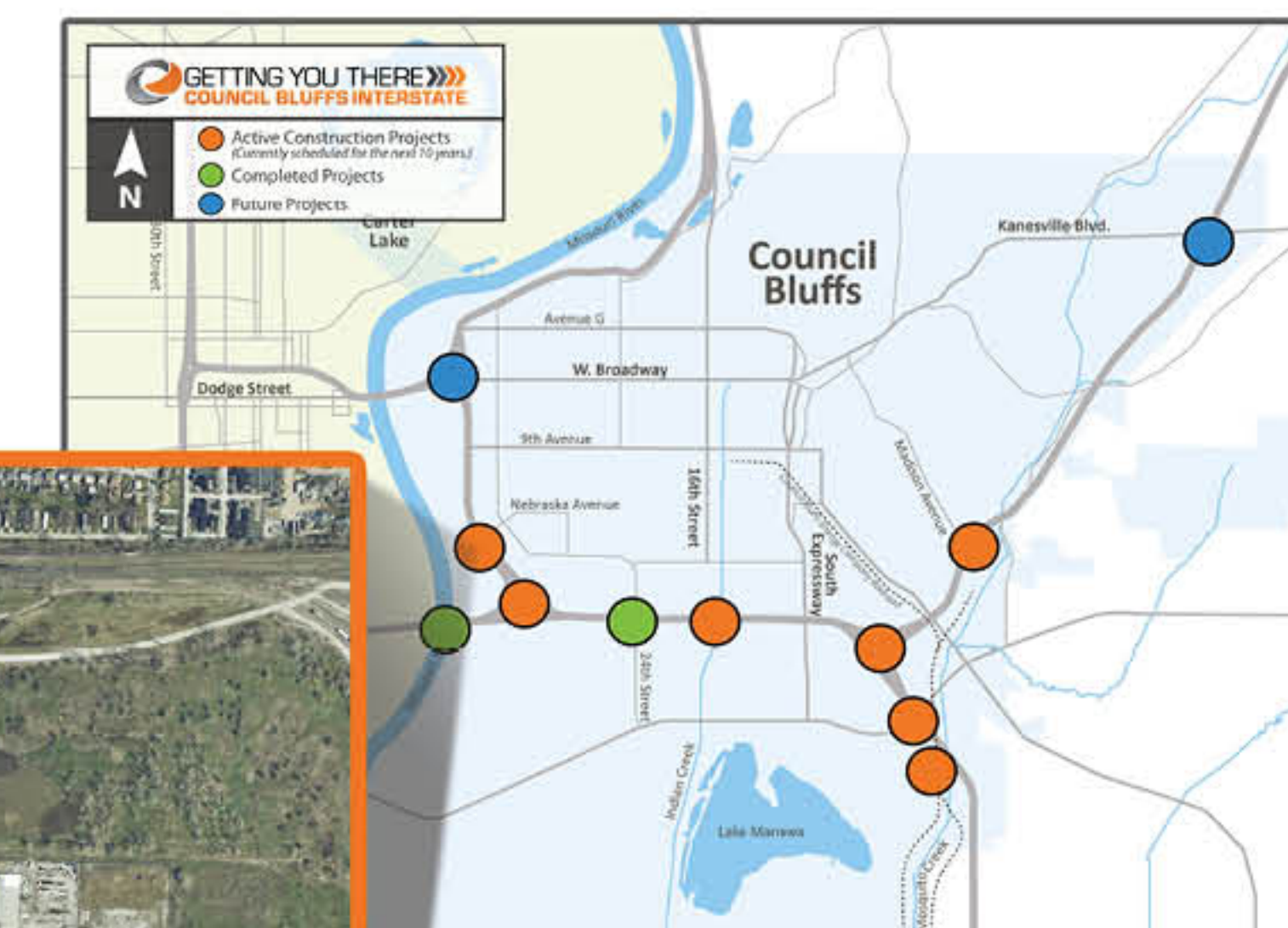


The Nebraska Avenue Interchange is being reconstructed to meet current design standards and capacity needs.

Project highlights include:

- » Reconstruction of the folded diamond interchange.
- » Realignment of Nebraska Avenue interchange with I-29.
- » Reconstruction of Union Pacific Railroad Bridge.

Construction is anticipated to begin in 2017 and will be completed in fall 2021.



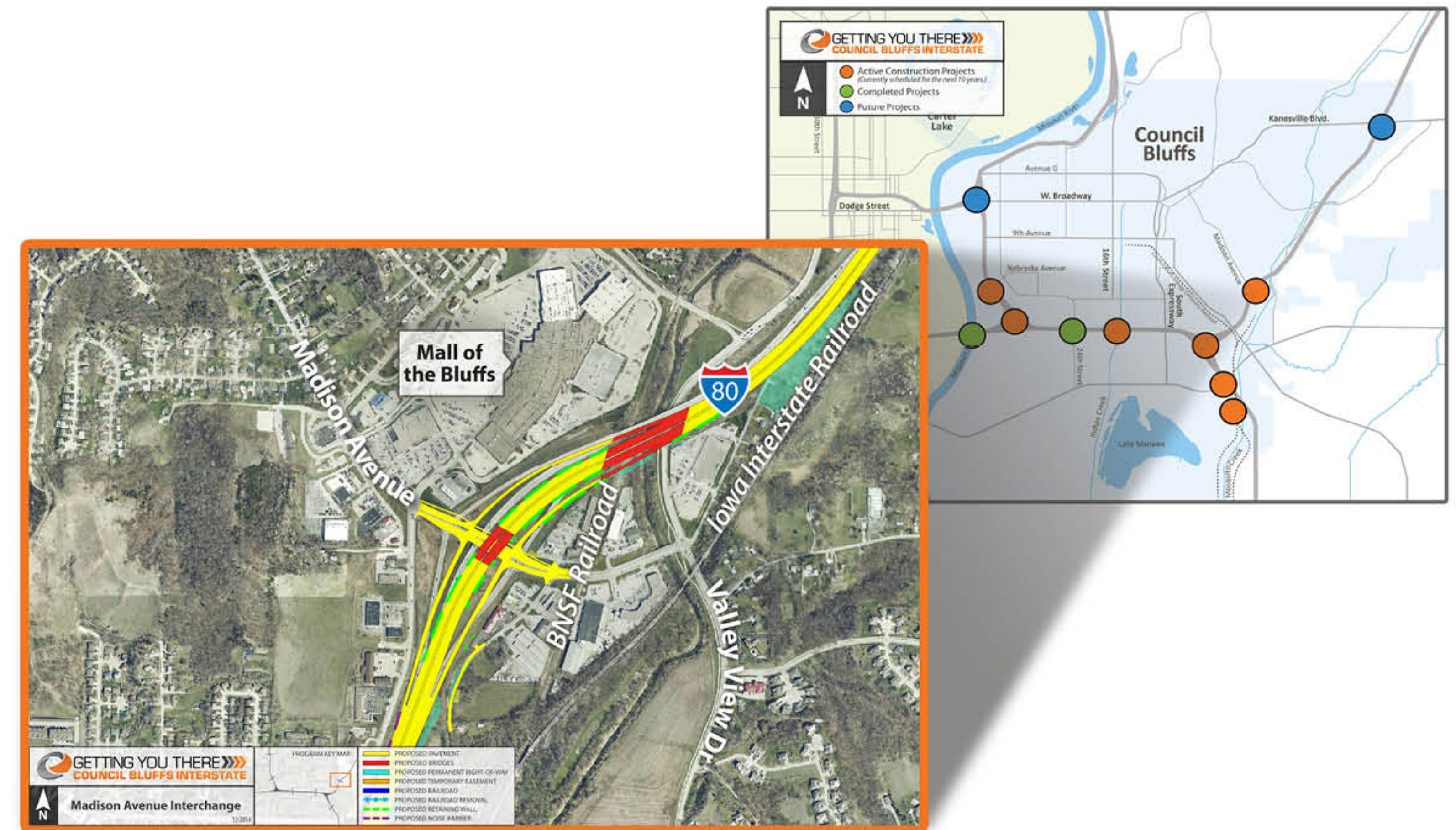
MADISON AVENUE INTERCHANGE

The Madison Avenue Interchange is being reconstructed to meet current design standards and capacity needs.

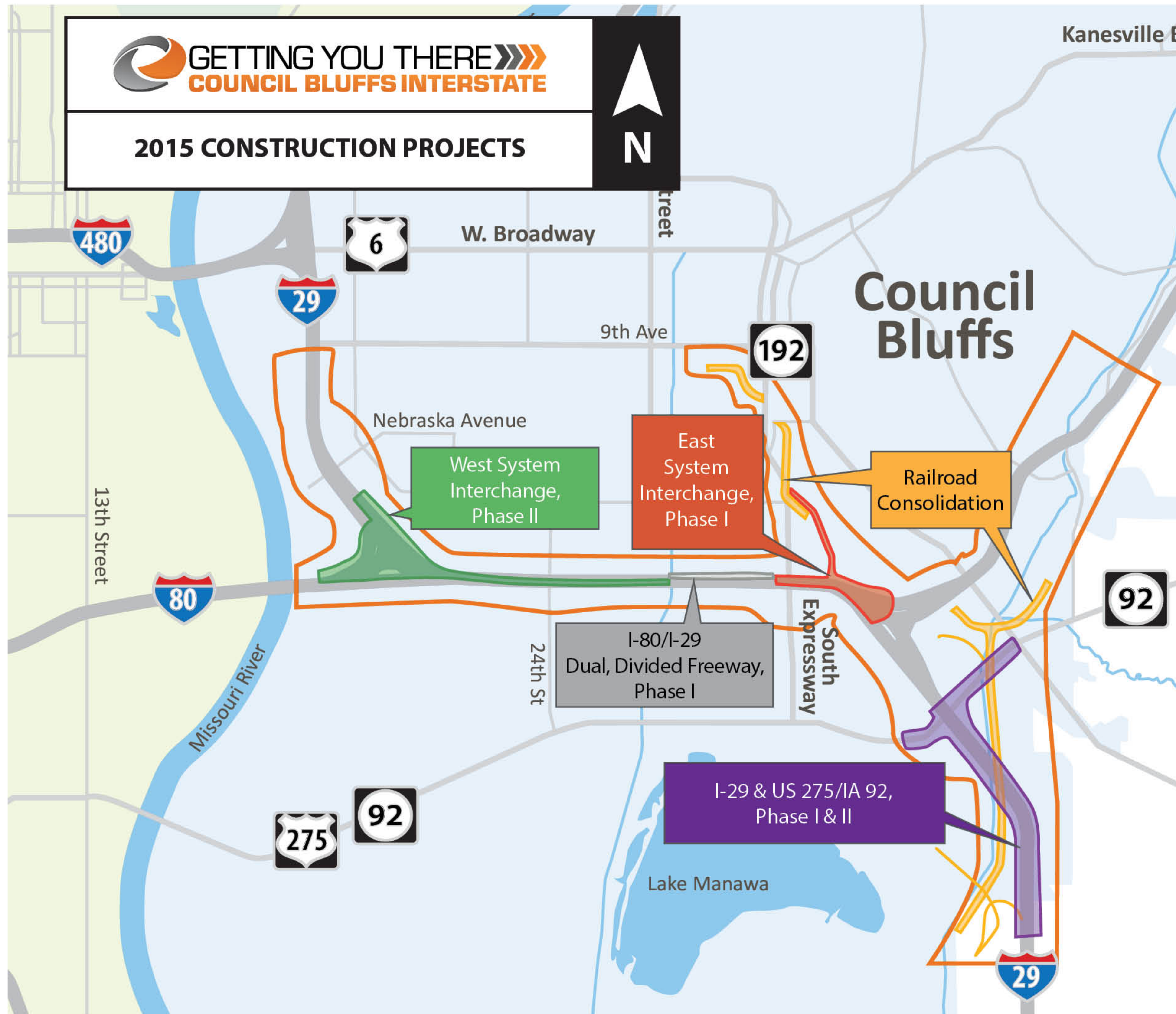
Project highlights include:

- » Construction of the tight urban diamond interchange.
- » Reconstruction of bridges over Madison Avenue.
- » Construction of longer acceleration lanes when merging onto I-80.

Construction is anticipated to begin in 2019 and will be completed in 2022.



2015 CONSTRUCTION PROJECTS



GETTING YOU THERE
COUNCIL BLUFFS INTERSTATE

2015 CONSTRUCTION PROJECTS



West System Interchange, Phase II
Grading and paving for future westbound I-80 express lanes and bridge construction TIMEFRAME: Construction anticipated to begin summer 2015; expect this phase to be completed summer 2017.
East System Interchange, Phase I
Bringing in 1,132,209 cubic yards of earthwork for embankment and grading work TIMEFRAME: Construction ongoing; expect this phase to be completed in spring 2016.
Railroad Relocation
Consolidate railroad operations into a new common corridor west of Mosquito Creek under I-29 and Iowa 92 TIMEFRAME: Construction anticipated to begin late summer 2015; expect completion fall 2017.
I-80/I-29 Dual, Divided Freeway, Phase I
Complete noise wall, finish grading and paving of new I-29 northbound/I-80 local lanes TIMEFRAME: Construction is ongoing; this phase is anticipated to be completed in summer 2015 with traffic shifts anticipated in June.
I-29 and U.S. 275/Iowa 92 Interchange
<ul style="list-style-type: none"> Westbound lanes and bridge reconstruction, and I-29 northbound grading Demolition of eastbound lanes and bridge, and construction of new northbound ramps TIMEFRAME: Phase I construction is ongoing; Phase II construction anticipated to begin spring 2015. Anticipated completion of all Phase I and Phase II work in summer 2017.

WHAT TO EXPECT

What can you expect during the construction season?

 Noise

 Vibration

 Dust

 Large equipment and materials



Increase truck/traffic hauling operations



Traffic impacts



Lane shifts



Lane closures and overnight interstate closures

For any issues regarding construction impacts, please email us at info@CouncilBluffsInterstate.com or call us at **712.326.3712**.

I-29 AND U.S. 275/IOWA 92 INTERCHANGE 2015 CONSTRUCTION AND TRAFFIC MOVEMENTS



- » Iowa 92 traffic continues to be one lane in each direction.
- » Beginning April 2015, ramps to and from I-29 northbound from U.S. 275/Iowa 92 will close for approximately one year.



- » Denmark Drive will be closed from approximately April through September 2015.
- » The next change to occur in 2015 begins in September, when U.S. 275/Iowa 92 traffic moves from the eastbound lanes to the newly finished westbound lanes. Denmark Drive will open at this time.

I-29 AND U.S. 275/IOWA 92 INTERCHANGE 2015 DETOUR



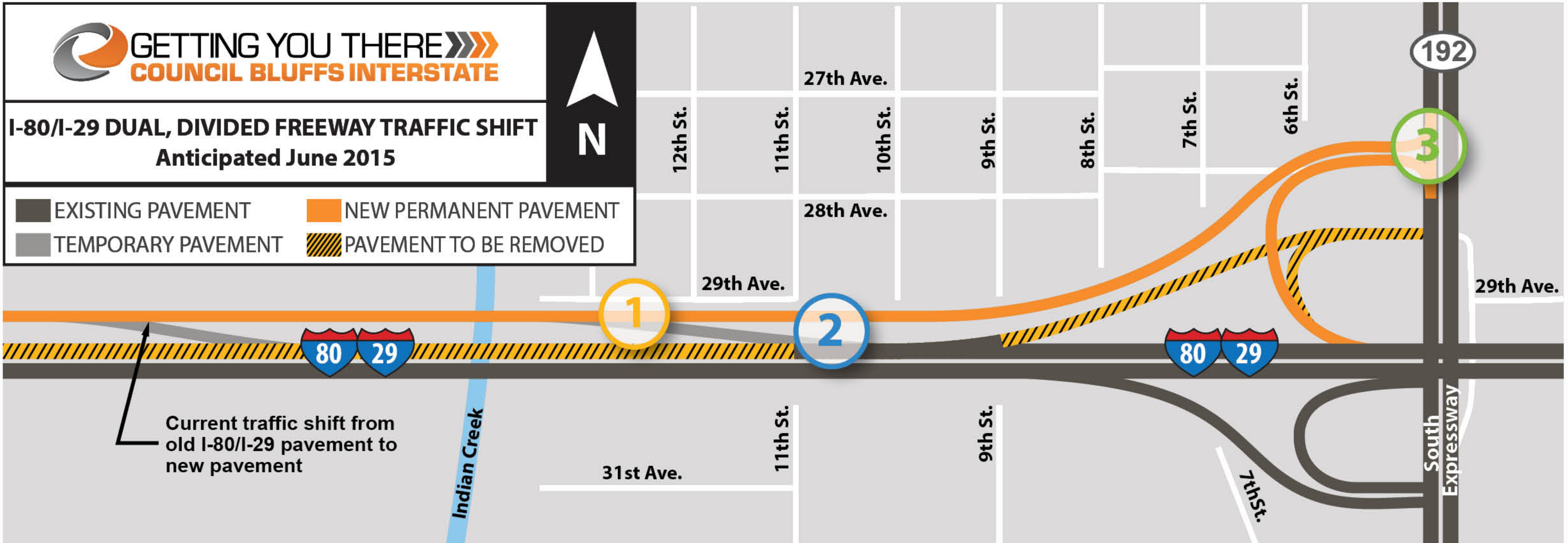
I-80/I-29 DUAL, DIVIDED FREEWAY 2015 TRAFFIC MOVEMENTS



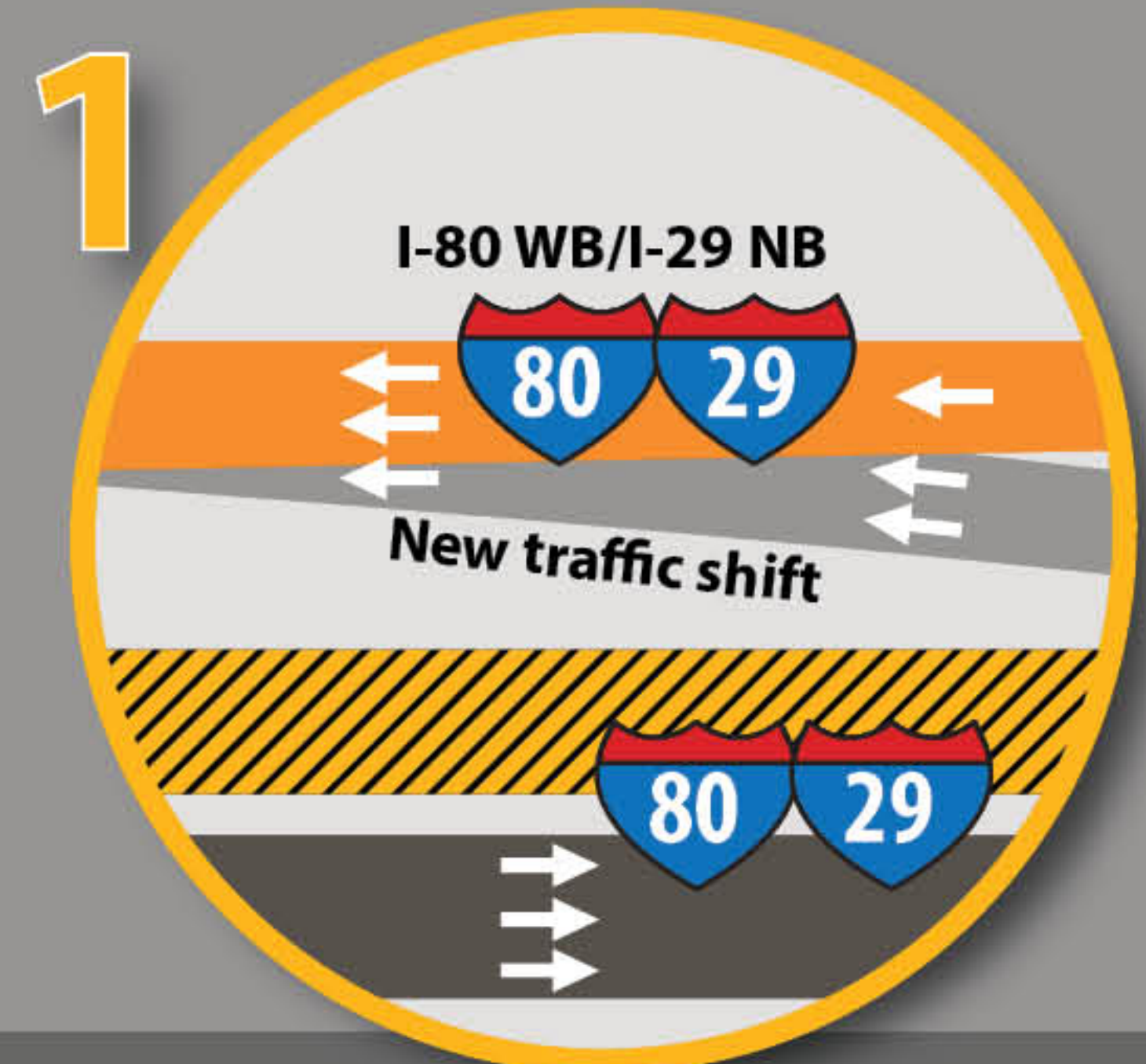
I-80/I-29 DUAL, DIVIDED FREEWAY TRAFFIC SHIFT
Anticipated June 2015



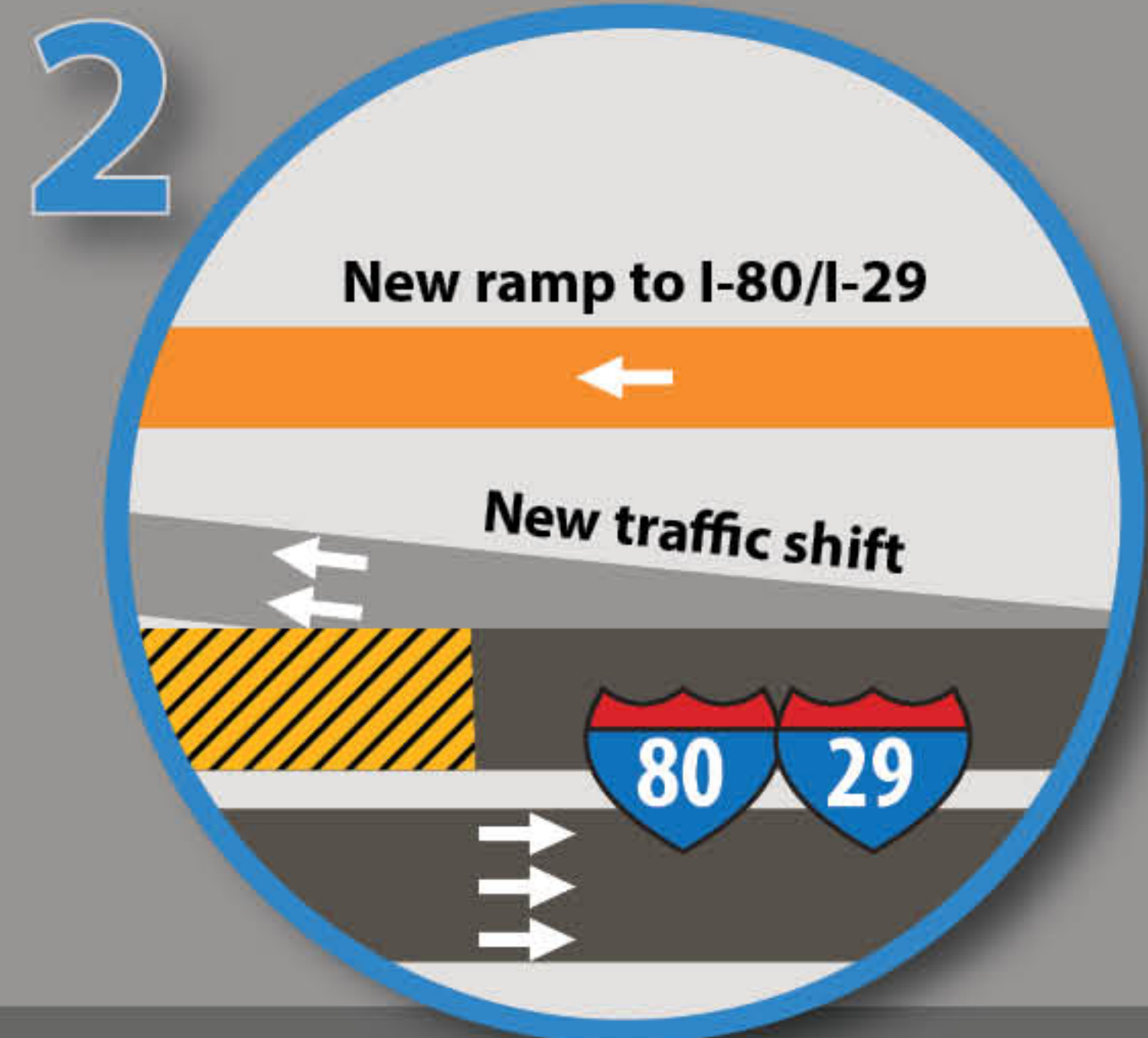
EXISTING PAVEMENT
 NEW PERMANENT PAVEMENT
 TEMPORARY PAVEMENT
 PAVEMENT TO BE REMOVED



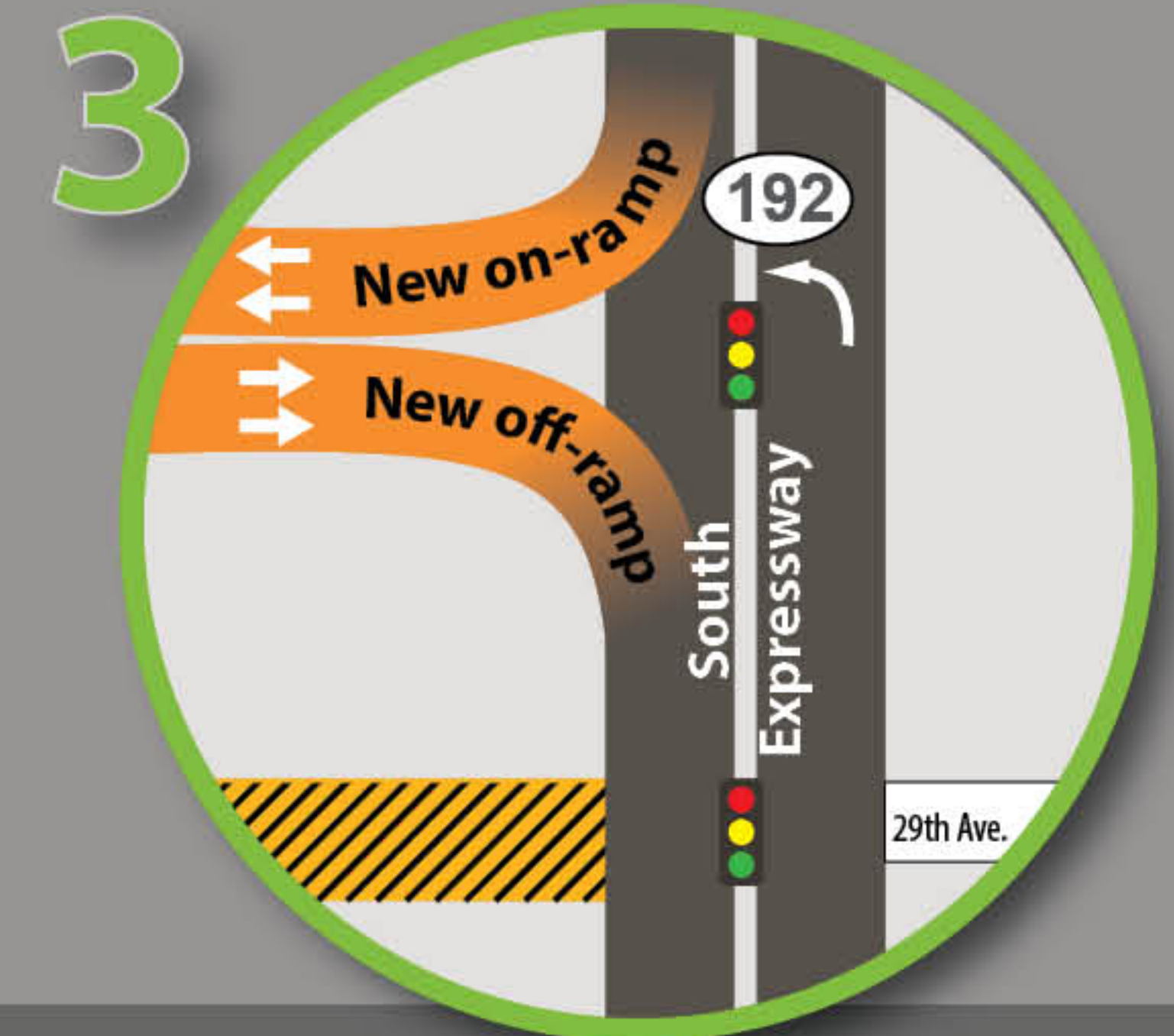
Current traffic shift from old I-80/I-29 pavement to new pavement



ON-RAMP MERGE WITH NORTHBOUND I-29/WESTBOUND I-80
Interstate traffic will merge with on-ramp traffic just east of Indian Creek and three travel lanes will carry traffic northbound/westbound.



NORTHBOUND I-29/WESTBOUND I-80 LOCAL LANES
Interstate traffic will use a new traffic shift from old I-29/I-80 to new I-29/I-80 local lanes.



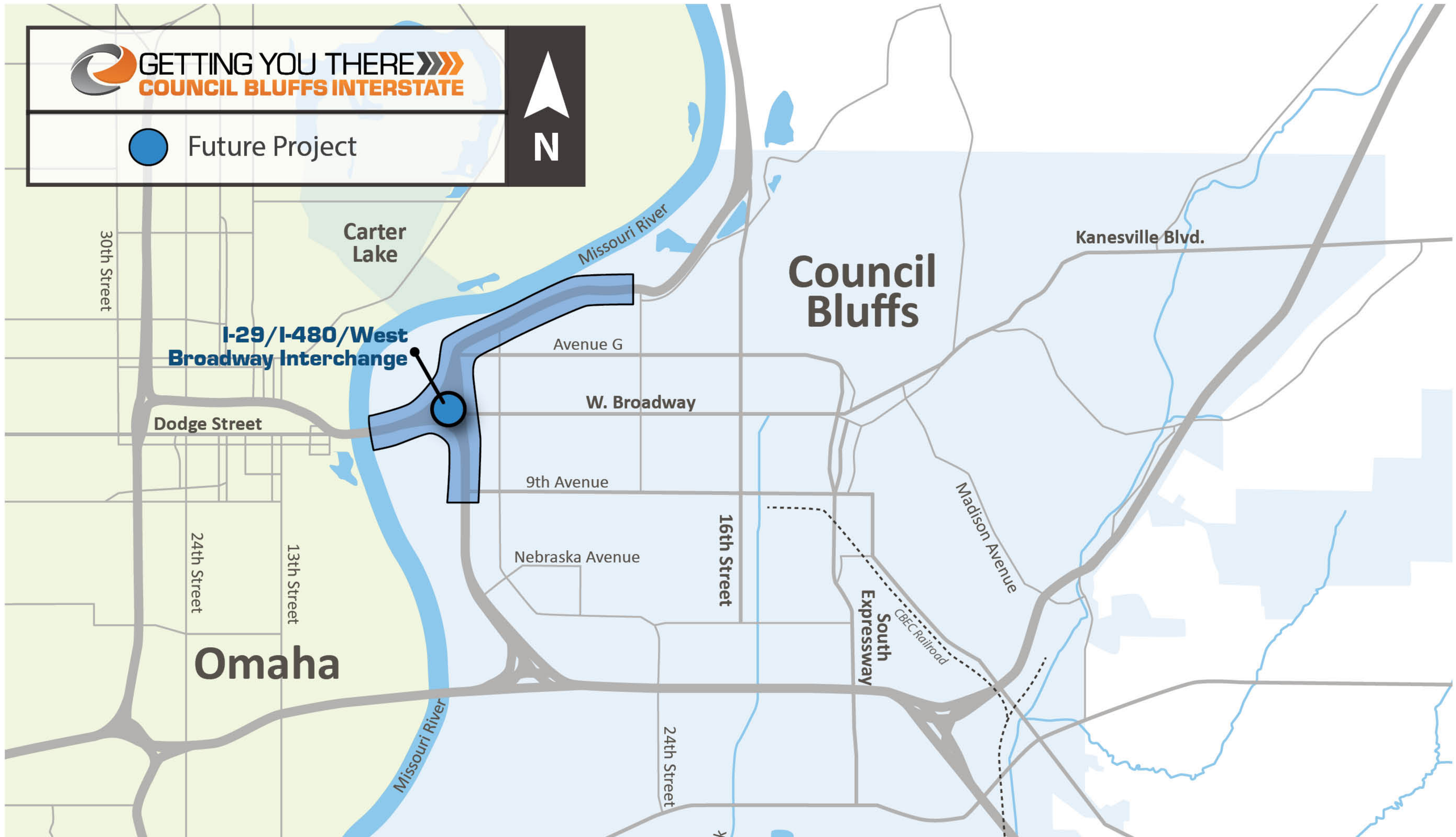
SOUTH EXPRESSWAY/IOWA 192 (Exit 3) ON & OFF RAMPS
Traffic will begin to use the new on- and off-ramps for northbound I-29/westbound I-80, located north of the existing ramps.

I-80/I-480/WEST BROADWAY SYSTEM INTERCHANGE



 **GETTING YOU THERE**
COUNCIL BLUFFS INTERSTATE

 Future Project



WORK ZONE SAFETY



Every year, motorists cause **350** work zone crashes in Iowa.

With nearly one work zone accident occurring every day, **don't let today be YOUR day.**

- » Slow down.
- » Stay alert.
- » Obey the signs.
- » Keep your distance.
- » Pay attention.

EXPECT THE UNEXPECTED!

»»» BUSINESS MATTERS

Stay informed...we have tools and resources to keep you and your patrons moving during construction.





- » Program website.
- » Email and text alerts.
- » Program newsletter.
- » Program resources to display in your business/organization.



SIGN UP FOR TRAFFIC ALERTS

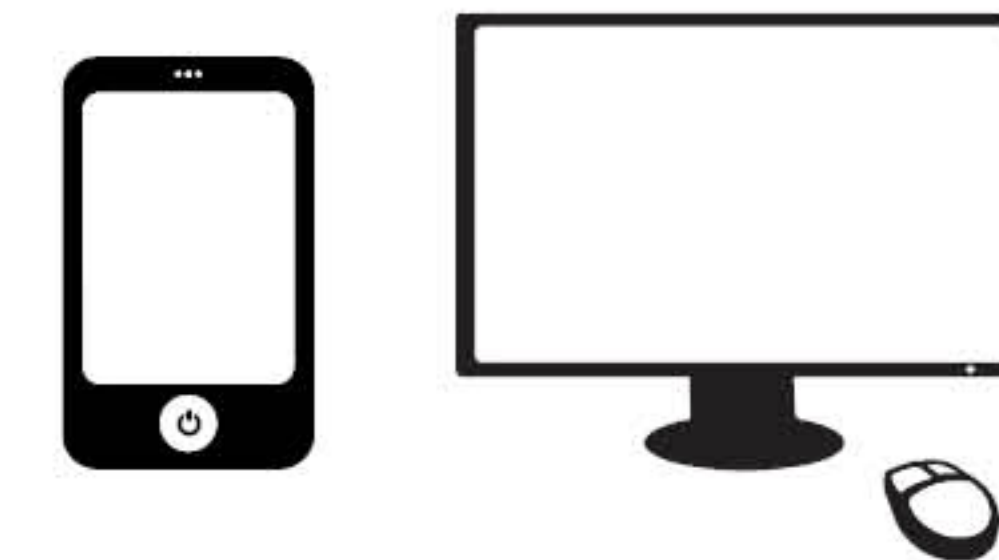
**GETTING YOU THERE...
PLAN AHEAD... AVOID THE TRAFFIC!**

Iowa DOT's 511 Information System allows you to receive real-time traffic updates:

- » 511 is on social media.  
- » Download the mobile app.  
- » Sign up for personalized text or email alerts at www.511ia.org.
- » Sign up for 511 alerts at today's meeting.



Traveler Information
www.511ia.org or dial 511



STAY INFORMED

PLAN AHEAD... AVOID THE TRAFFIC!

To stay informed on project developments or learn about upcoming public events:

VISIT THE PROGRAM WEBSITE:

www.CouncilBluffsInterstate.IowaDOT.gov

FOLLOW US ON SOCIAL MEDIA:



VISIT THE PROGRAM OFFICE:

Mall of the Bluffs

1751 Madison Avenue, Suite 750

Council Bluffs, IA 51503

Open 8:00 a.m.-5:00 p.m. Monday-Friday

(Enter on the east side of the Mall; parking is located on the east side of the Dillard's Clearance Store.)

EMAIL US:

info@CouncilBluffsInterstate.com

CALL US:

712.326.3712