



US 275 PRE-BID MEETING – 4/2/14
PROPOSAL ID 78-0293-097

Presented by :

Iowa DOT - Council Bluffs Interstate Program

AGENDA



- » Welcome & Introductions
- » Proposal
- » Geotechnical
- » Staging & Design
- » SPs (levee, progress schedule)
- » Utilities
- » Questions and Discussion

APRIL LETTING



US 275 – Letting April 15, 2014

- » Interchange grading and geotechnical mitigation
- » NB and SB bridges for I-29 over Mosquito Creek
- » US 275 WB bridge over Mosquito Creek
- » US 275 WB bridge over I-29

APRIL PROPOSAL INFORMATION

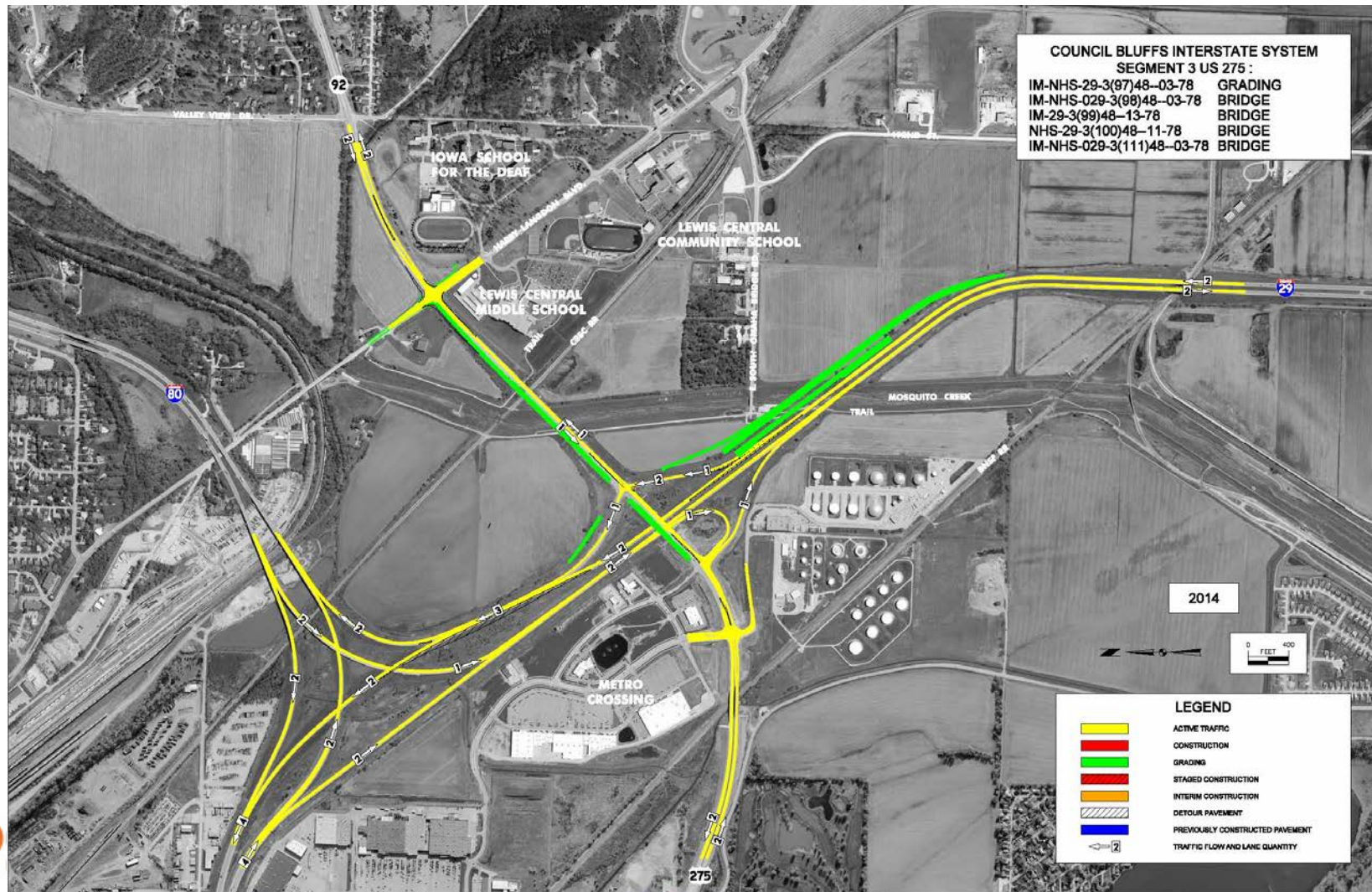


- » CONTRACT COMPLETION DATE: 10/02/15
- » 01 COMPLETION DATE: 12/05/14 TO COMPLETE ROADWAY EMBANKMENT
SITE 01
TO COMPLETE ALL WORK ASSOCIATED WITH THE ROADWAY EMBANKMENT INCLUDING, BUT NOT LIMITED TO, RIGID INCLUSIONS, WICK DRAINS, MSE WALLS AND CLASS 10 EXCAVATION.
- » 02 COMPLETION DATE: 07/31/15 TO COMPLETE STRUCTURES
SITE 02
TO COMPLETE ALL WORK ASSOCIATED WITH THE BRIDGE PROJECT INCLUDED IN IM-029-3(99)4--13-78 AND TO COMPLETE ALL WORK ASSOCIATED WITH THE BRIDGE PROJECT INCLUDED IN NHS-029-3(100)48--11-78.

COUNCIL BLUFFS INTERSTATE SYSTEM

SEGMENT 3 US 275 :

IM-NHS-29-3(97)48-03-78	GRADING
IM-NHS-029-3(98)48-03-78	BRIDGE
IM-29-3(99)48-13-78	BRIDGE
NHS-29-3(100)48-11-78	BRIDGE
IM-NHS-029-3(111)48-03-78	BRIDGE

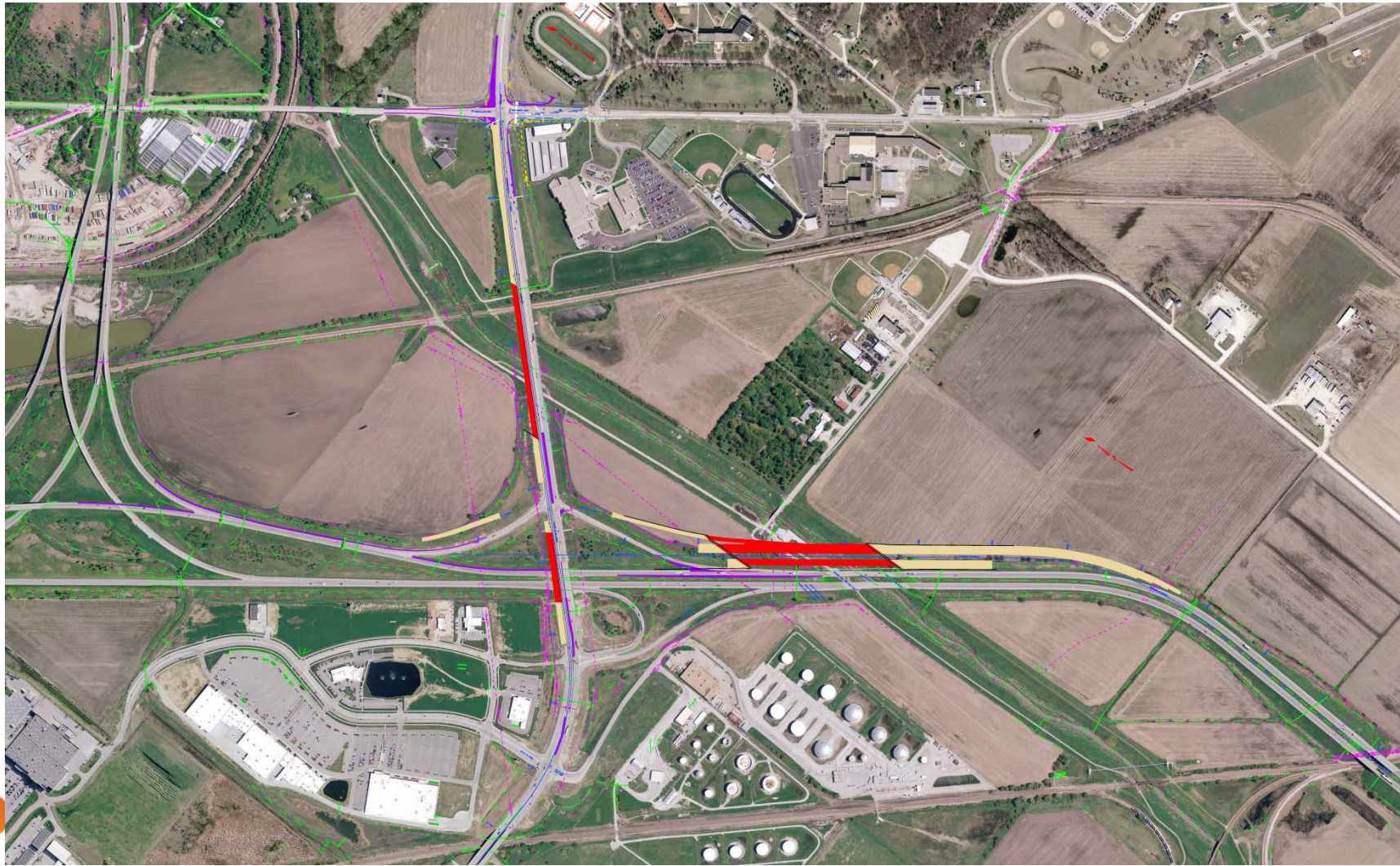


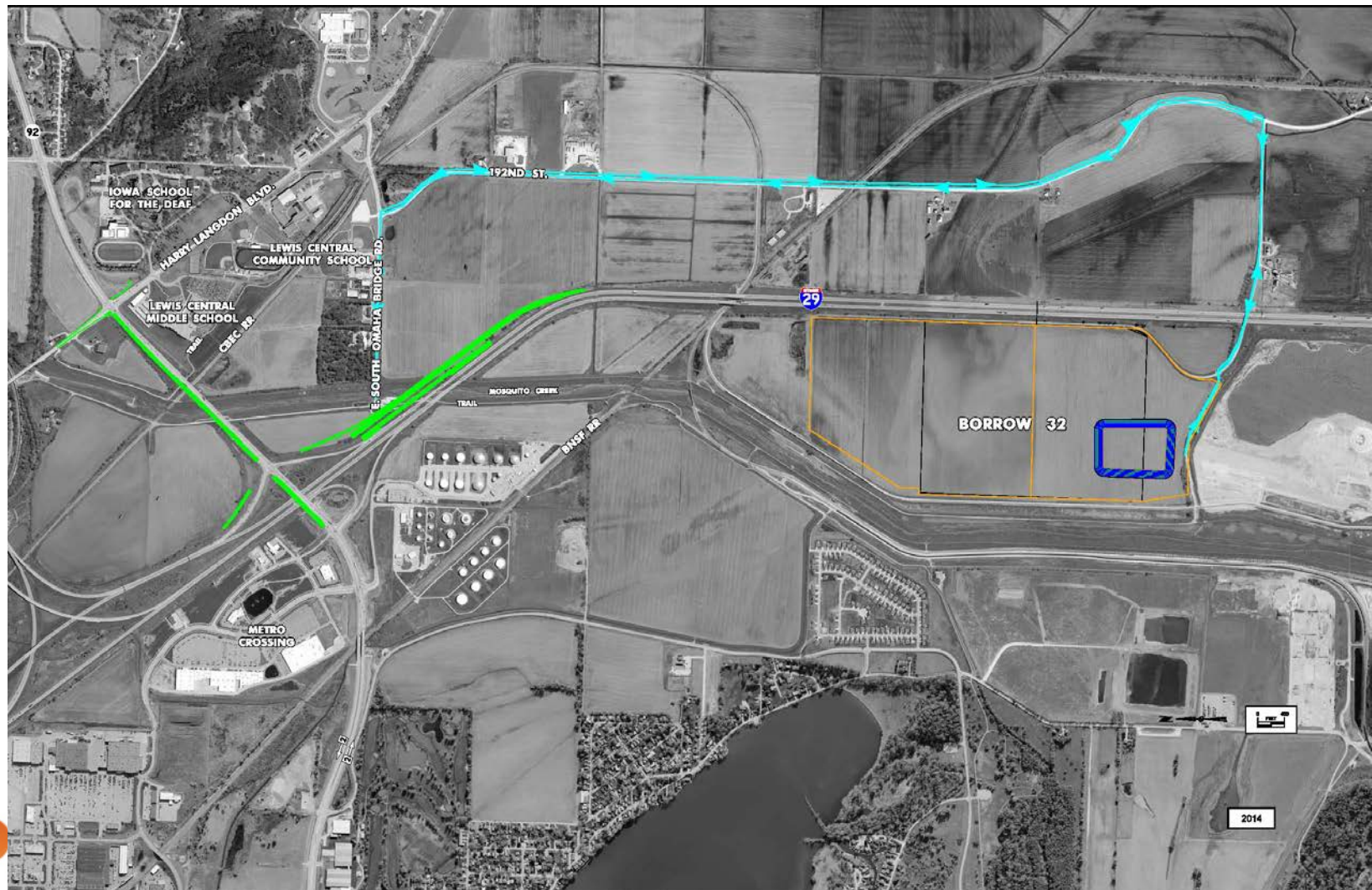
2014

LEGEND

	ACTIVE TRAFFIC
	CONSTRUCTION
	GRADING
	STAGED CONSTRUCTION
	INTERIM CONSTRUCTION
	DETOUR PAVEMENT
	PREVIOUSLY CONSTRUCTED PAVEMENT
←→	TRAFFIC FLOW AND LANE QUANTITY







MAY LETTING



(370) Package – Letting May 20, 2014

- » Grade & pave 29th Avenue and 23rd Street
- » Earthwork and geotechnical mitigation on proposed I-80 and I-29

Preliminary Plans are available on the Iowa DOT Website
www.iowadot.gov/Contracts/April2Pre-BidMeeting

MAY PROPOSAL INFORMATION



» CONTRACT COMPLETION DATE: 11/20/15

PRELIMINARY

» 01 COMPLETION DATE: 09/05/14 TO COMPLETE WORK ON 29TH AND 23TH STREETS

SITE 01

TO COMPLETE ALL WORK ASSOCIATED WITH THE GRADING, PAVING AND OPENING 29TH AND 23RD STREETS TO TRAFFIC.

» 02 SPECIFIED START DATE: 08/03/15 105 CALENDAR DAYS TO COMPLETE EMBANKMENT WEST OF SOUTH EXPRESSWAY

SITE 02

TO COMPLETE ALL WORK ASSOCIATED WITH THE ROADWAY EMBANKMENT INCLUDING, BUT NOT LIMITED TO, WICK DRAINS AND CLASS 10 EXCAVATION FROM STATION 7533+75 TO STATION 7552+75 (WB I-80), STATION 8536+50 TO 8547+00 (NB I-29) AND STATION 51546+00 TO 51551+40 (IOWA 192 LOOP A).

» 03 COMPLETION DATE: 06/01/15 TO COMPLETE BRIDGE BERMS

SITE 03

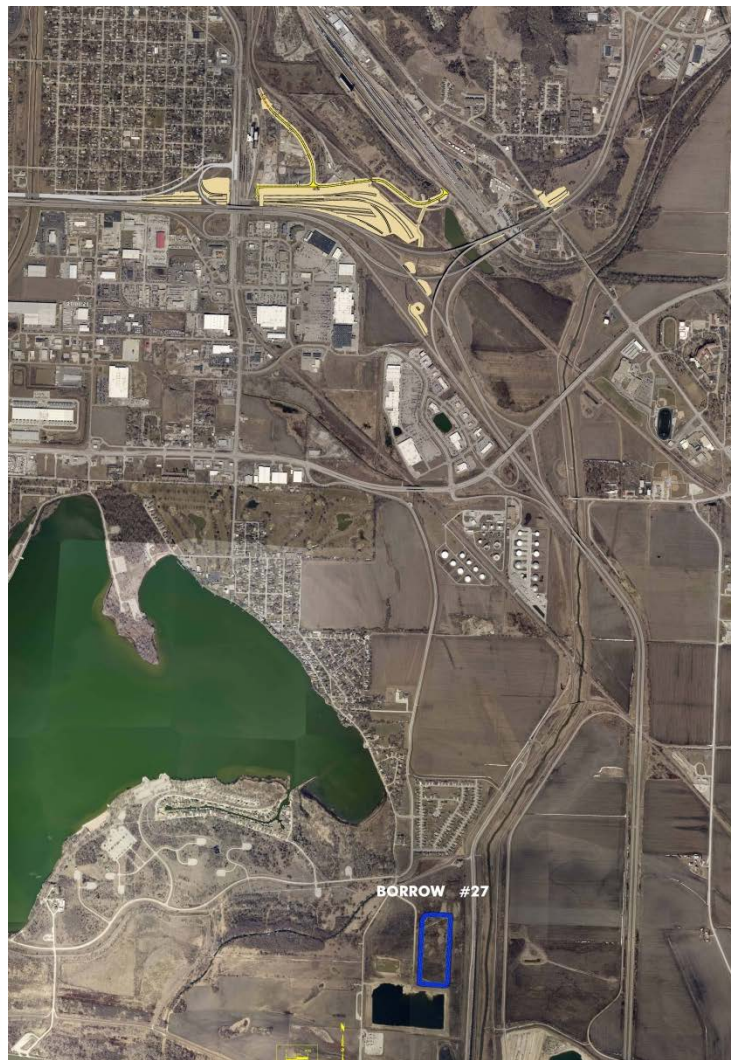
TO COMPLETE ALL WORK ASSOCIATED WITH THE ROADWAY EMBANKMENT FOR THREE BRIDGE BERMS INCLUDING, BUT NOT LIMITED TO, WICK DRAINS AND CLASS 10 EXCAVATION FROM STATION 7576+00 TO STATION 7580+50 (I-80), STATION 7611+50 TO 7617+00 (WB I-80) AND STATION 61576+50 TO STATION 615780+00 (WB I-80 RAMP A)

» ***SITE RESTRICTIONS***

DUE TO RIGHT-OF-WAY ACQUISITION, NO WORK MAY BEGIN ON PARCEL 342 NORTH OF EXISTING 29TH STREET (SEE PLAN SHEET HE.5 & HE.6) UNTIL AFTER MAY 1, 2014. DUE TO RIGHT-OF-WAY ACQUISITION, NO WORK MAY BEGIN ON PARCEL 342 SOUTH OF EXISTING 29TH STREET (SEE PLAN SHEET H.5 & H.6) UNTIL AFTER JULY 1, 2014.







CONSTRUCTION SPECIFICATIONS – SPECIAL PROVISIONS

SPECIAL PROVISION – LEVEE CONSTRUCTION



- » SP-120048 Emergency Action Plan
- » SP-120158 Levee Construction
- » SP-120166 Excavation For Structures In Levee Critical Area
- » SP-120167 Excavation For Structures In Levee Critical Area



Why is Iowa DOT including this Special Provision?

- » Program Demands
- » Planning and Management Tool for Iowa DOT
- » Communication to the Public



What's New?

- » Pre-Construction Scheduling Conference
- » Cost-Loading
- » Baseline Schedule
- » Monthly Schedule Update – Tied to Payment
- » Training

UTILITIES

REFER TO THE TWO UTILITY BID ATTACHMENTS
FOR ADDITIONAL INFORMATION.