



Current conditions at the Madison Ave Interchange

## PROJECT DESCRIPTION

The Madison Avenue Interchange reconstruction involves rebuilding the interchange and bridges over Mosquito Creek in order to meet current design standards and capacity needs. The reconstructed interchange will be a tight urban diamond with a similar configuration to the existing interchange. This project will also include construction of longer acceleration lanes when merging onto I-80, allowing drivers to turn right from Madison Ave onto the I-80 westbound ramp without stopping.

The Madison Avenue Interchange on I-80 is located about a mile northeast of the I-80/I-29 East System Interchange.

## PROJECT SCHEDULE

**Anticipated Construction:** 11/2021–05/2024

## BENEFITS



Four through lanes provided for Madison Avenue in interchange area

Additional turn lanes provided to improve capacity and safety



New bike/pedestrian path included near Madison Avenue

## FOR MORE INFORMATION

Wendy Thompson  
Public Information Officer  
712.216.3339  
Wendy.Thompson@  
CouncilBluffsInterstate.com

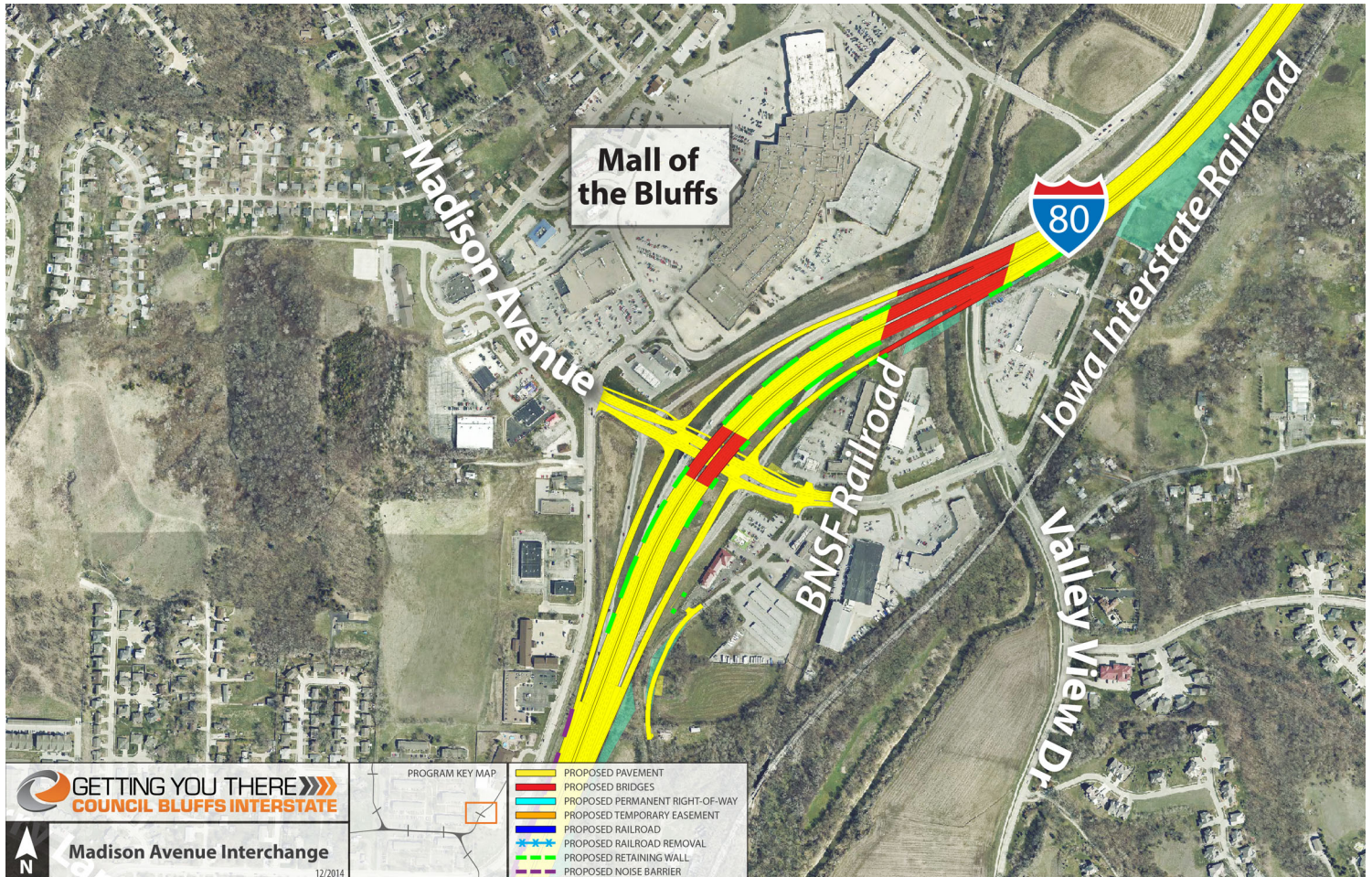


# MADISON AVENUE INTERCHANGE

Council Bluffs, IA



## PROJECT MAP



1751 Madison Avenue, Suite 750 • Council Bluffs, IA 51503 • 712.216.3339  
[www.CouncilBluffsInterstate.IowaDOT.gov](http://www.CouncilBluffsInterstate.IowaDOT.gov) • [info@CouncilBluffsInterstate.com](mailto:info@CouncilBluffsInterstate.com)



Federal and state laws prohibit employment and/or public accommodation discrimination on the basis of age, color, creed, disability, gender identity, national origin, pregnancy, race, religion, sex, sexual orientation, or veteran's status. If you believe you have been discriminated against, please contact the Iowa Civil Rights Commission at 800-457-4416 or Iowa Department of Transportation's affirmative action officer. If you need accommodations because of a disability to access the Iowa Department of Transportation's services, contact the agency's affirmative action officer at 800-262-0003.