

## Multiple construction closures expected this week

COUNCIL BLUFFS, Iowa — May 7, 2021 – Council Bluffs interstate travelers will soon notice construction activities on the I-80/I-29 Dual, Divided Freeway will be complete. There will be planned, temporary, overnight closures occurring throughout next week to complete the project. All dates and events may change due to weather and field conditions.

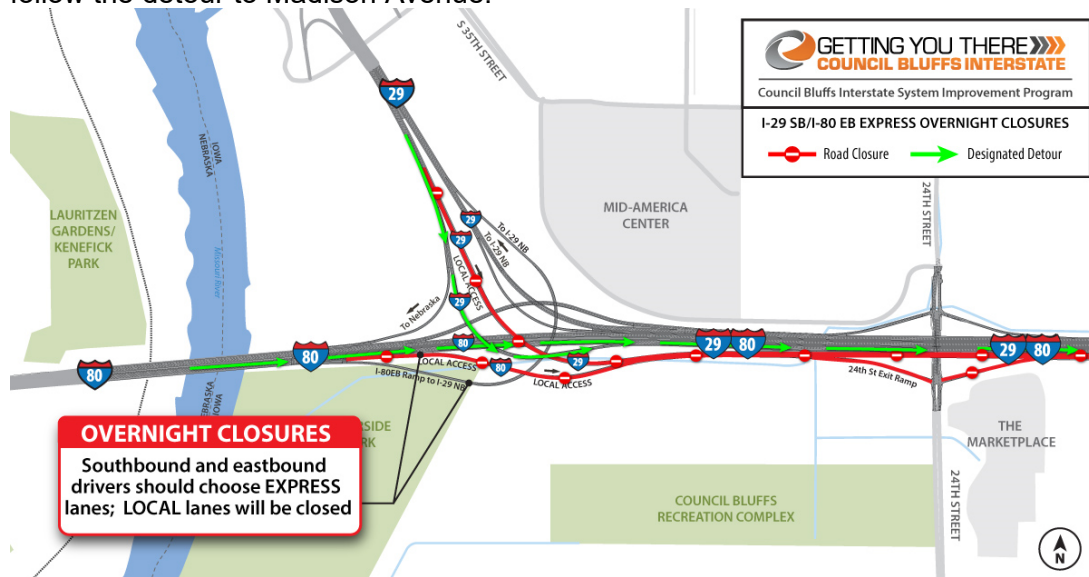
### I-29 Southbound/I-80 Eastbound Local Closed Overnight Sunday and Monday

- On Sunday night, May 9, all travelers on I-29 southbound/I-80 Eastbound Local will exit at South Expressway from 1 a.m. to 5 a.m. (Monday A.M.). I-80 Eastbound Express will remain open.



- On Monday night, May 10, the full I-29 southbound/I-80 Eastbound Local system will be closed from 10 p.m. to 6 a.m. Travelers will have to use I-80 Eastbound Express lanes. Travelers wanting to get off the interstate at 24<sup>th</sup> Street or South Expressway should

follow the detour to Madison Avenue.



## I-80 Eastbound Express Closed Overnight Tuesday and Wednesday

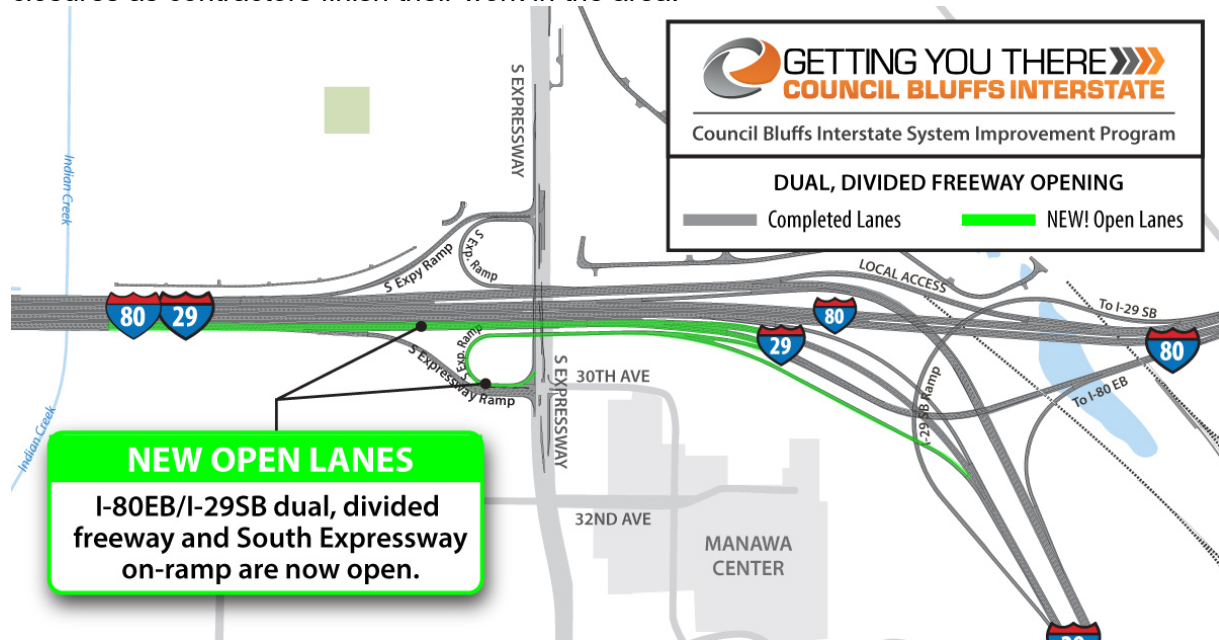
The full I-80 Eastbound Express system will be closed from 8 p.m. to 6 a.m., on both Tuesday, May 11, and Wednesday, May 12. Travelers can use I-29 southbound/I-80 Eastbound Local to get to their destinations.



## Dual, Dived Freeway Opening

The full I-80/I-29 Dual, Divided Freeway system will be open to traffic on Thursday morning, May 13. One of the many benefits this system will offer is redundancy and allows traffic to keep moving in both directions, even if lanes are blocked because of a crash or maintenance. One thing travelers will notice is that traffic merging from South Expressway will now have a separate ramp to allow trucks to accelerate to highway speeds. Travelers may encounter additional lane

closures as contractors finish their work in the area.



### Know Before You Go!

Iowa DOT encourages motorists to plan ahead, avoid distractions, follow signs and use caution while becoming accustomed to new traffic patterns. For notifications, please visit [511ia.org](http://511ia.org) and sign up for real time traffic alerts. Additional information can be found at [www.CouncilBluffsInterstate.iowaDOT.gov](http://www.CouncilBluffsInterstate.iowaDOT.gov). If you have questions or comments about construction impacts, please call us at 712-216-3339 or email us at [info@CouncilBluffsInterstate.com](mailto:info@CouncilBluffsInterstate.com).

The Iowa DOT reminds motorists to drive with caution, obey the posted speed limit and other signs in the work area, and be aware that traffic fines for moving violations are at least double in work zones. As in all work zones, drivers should stay alert, allow ample space between vehicles, and wear seat belts.

The latest traveler information is available anytime through our 511 system. Visit [511ia.org](http://511ia.org); call 511 (within Iowa) or 800-288-1047 (nationwide); stay connected with 511 on Facebook or Twitter (find links at <https://iowadot.gov/511/511-social-media-sites>); or download the free app to your mobile device.

It's easy to subscribe to Your 511 and sign up to receive the email/text alerts. Visit <https://new.511ia.org/#login> to sign up. For instructions and help for this feature, visit <https://www.511ia.org/help/section/how-to-create-and-manage-a-511-account.html>.

#

Contact: Wendy Thompson 712.261-3339 or [wendy.thompson@councilbluffsinterstate.com](mailto:wendy.thompson@councilbluffsinterstate.com)