

WEST SYSTEM INTERCHANGE

Council Bluffs, IA



North I-29 Overpass

Key Features

- Efficient and safe vehicle movement on I-80 and I-29
- Increased travel lanes
- Reduced motorist lane changes

For more information

Wendy Thompson
Public Information Officer
712.216.3339
Wendy.Thompson@
CouncilBluffsInterstate.com

PROJECT DESCRIPTION

Reconstruction of the West System Interchange will provide for efficient and safe vehicle movement on both I-29 and I-80 systems. An increase in the number of travel lanes and separation for both I-80 and I-29 will allow motorists to reduce the number of lane changes needed between I-80 and I-29.

The project includes full reconstruction of this system to system interchange, providing full access from I-80 and I-29 to the I-80 express lanes and the I-29/I-80 local lanes in the dual, divided freeway.

The West System Interchange reconstruction projects are located approximately one-half mile east of the Missouri River where I-80 intersects I-29 near the Western Historic Trails Center in Council Bluffs.

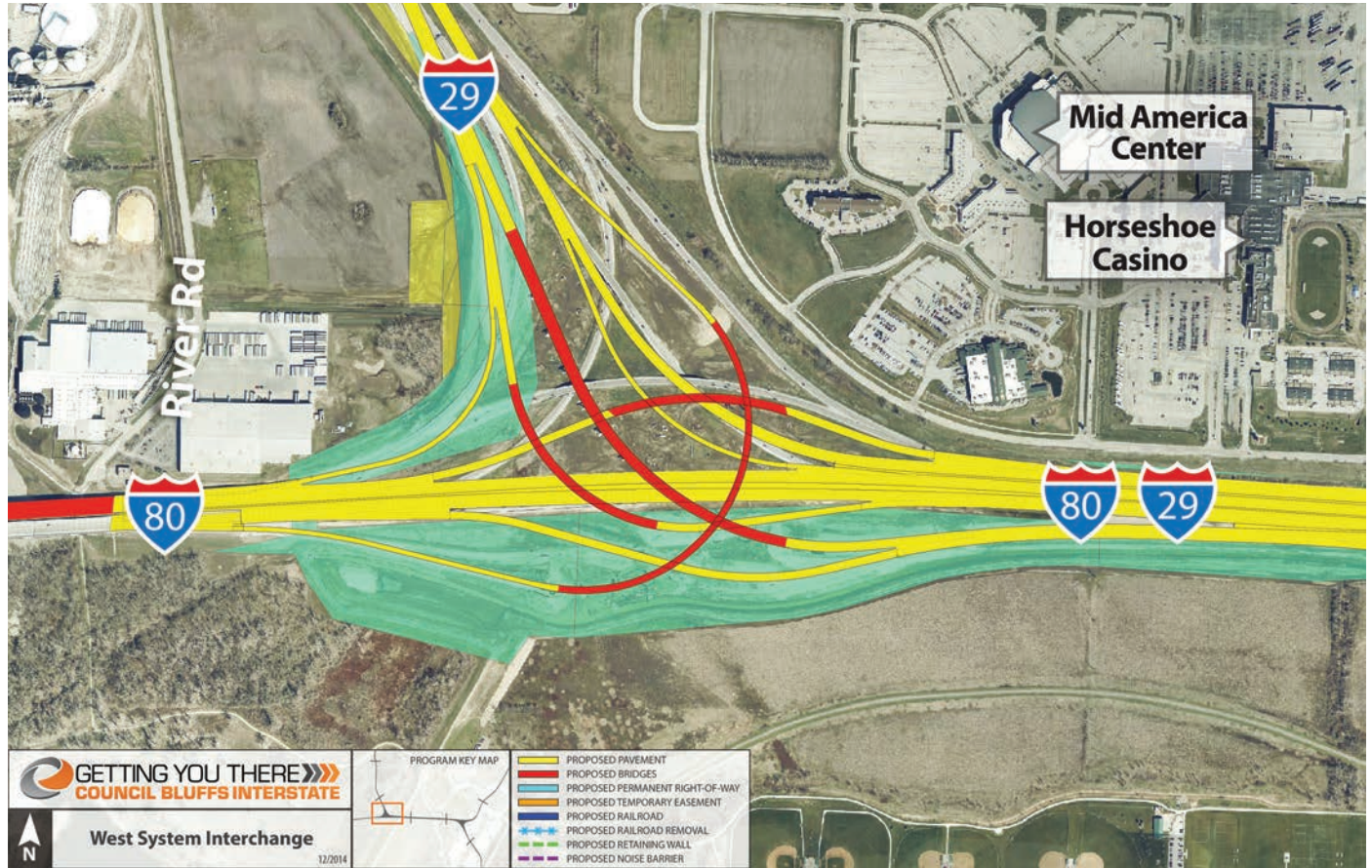


WEST SYSTEM INTERCHANGE

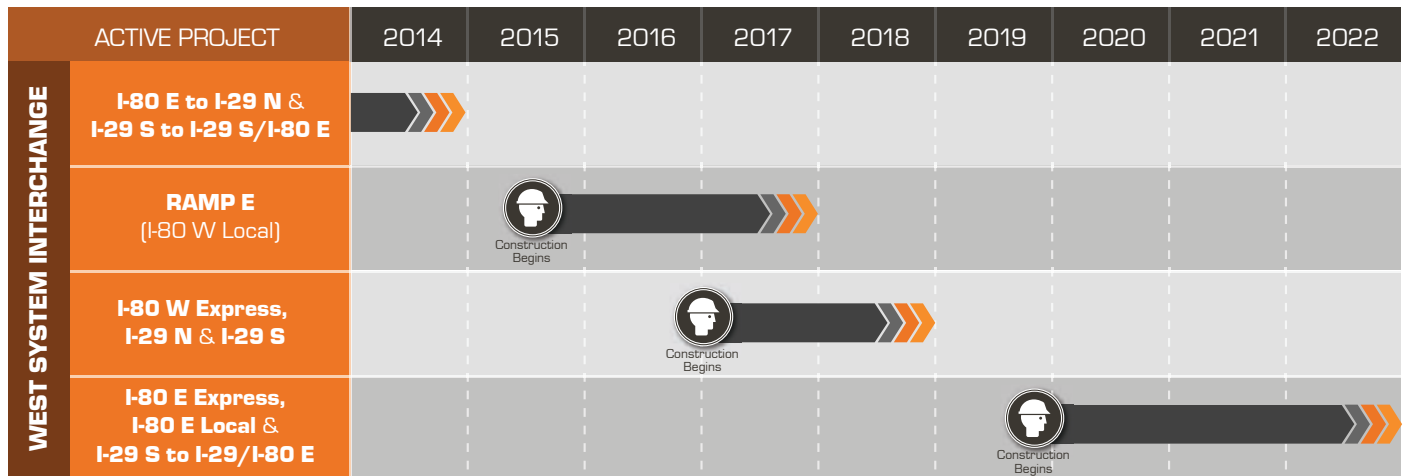
Council Bluffs, IA



PROJECT MAP



PROJECT SCHEDULE



Updated 06/2014