



Council Bluffs Interstate System Improvements

INSIGHT

“Rebuilding for the Future”

Issue Eight

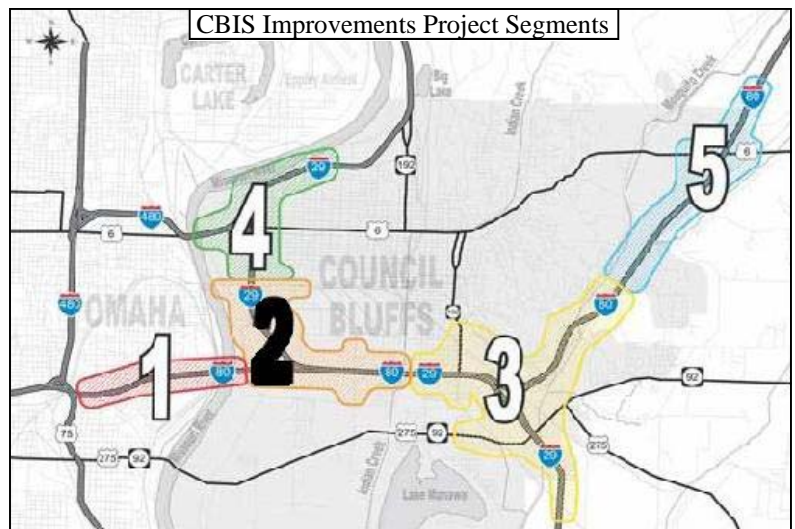
January 2009



CBIS Segment 2 Improvements

The Iowa Department of Transportation (DOT) is developing plans to reconstruct the interstate system in Council Bluffs. Due to the size and complexity of the overall improvements, Iowa DOT divided the system into five segments that could be designed and built independent of adjacent segments (see graphic on the right). Over time, the improvements for each segment will be implemented in smaller construction projects.

The design process for Segment 2 has progressed to the point that the Department has identified the design and right of way impacts. A meeting will be held to discuss the impacts with the public. See below for meeting information. Displays will be available at the project website (www.iowadot.gov/cbinterstate/index.asp) for individuals to view.



Mark Your Calendars!

Iowa DOT invites you to participate in a public information meeting for Segment 2 of the CBIS Improvements Project. The meeting will be held Tuesday, February 3, 2009, at the Mid-America Center from 5 to 7 p.m.

The purpose of the meeting is to provide information and gather feedback on the design

and right of way impacts for the Segment 2 construction project. In addition, the meeting will provide information from the last public meeting related to the phased construction for Segment 2. A variety of materials will be available for viewing and representatives from the Iowa DOT will be available to discuss and answer questions.



Public Meeting February 3, 2009

Where: Mid-America Center
Rooms K&L
One Arena Way
Council Bluffs, IA

When: 5 to 7 p.m.



Major Improvements Proposed for Segment 2

The ultimate design for Segment 2 includes construction of a dual divided freeway (providing 3 lanes in each direction for both I-80 and I-29 - 12 lanes total) and complete reconstruction of the West System Interchange. Due to funding constraints, the improvements will be constructed in two major phases.

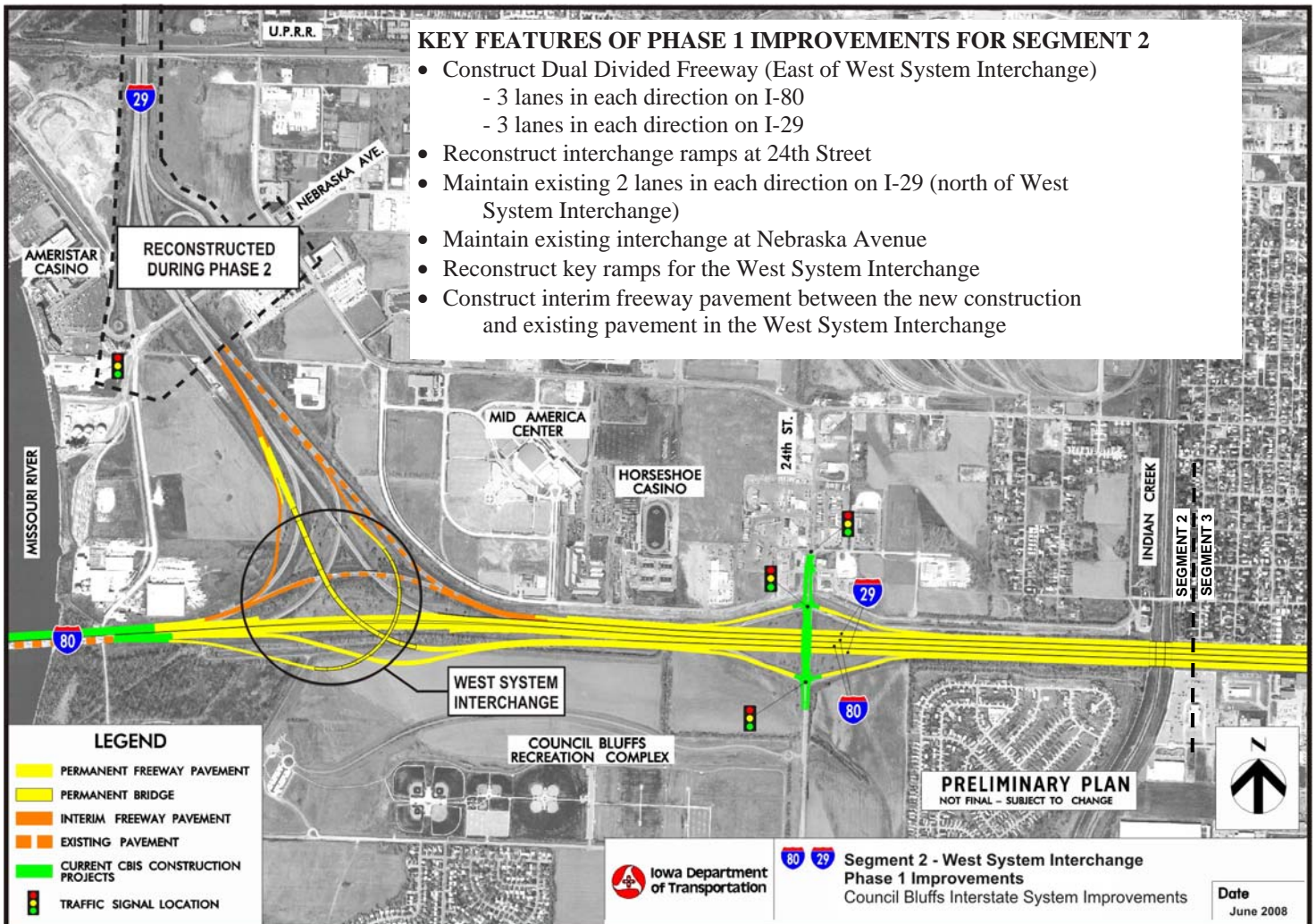
The first phase improvement will include several construction projects over multiple years to construct the dual divided freeway, key portions of the West System Interchange, and reconstruct the 24th Street interchange ramps. The proposed improvements for phase 1 are shown in the graphic below.

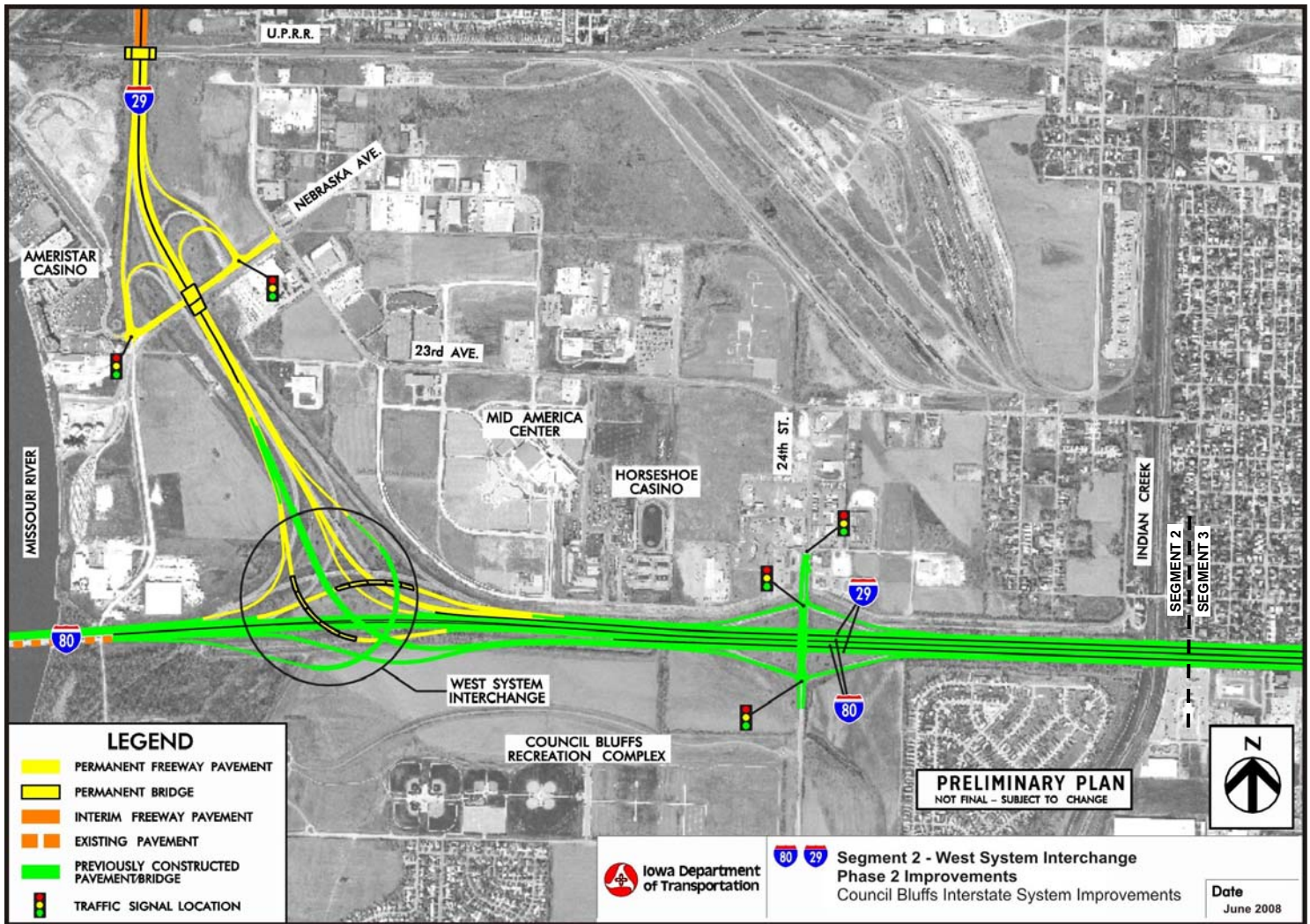
The projects during the second phase would include completing the reconstruction of the West System Interchange, reconstructing the Nebraska Avenue interchange, reconstructing the Union Pacific Railroad (UPRR) overpass, and reconstructing I-29 from the

West System Interchange to the UPRR overpass.

The phase 1 improvements would add capacity and improve traffic flow along the I-29/I-80 overlap section and would provide full access to 24th Street and I-80 from I-29. However, there would be some restrictions for I-80 traffic on the interior lanes of the dual divided section. The phase 1 improvements for Segment 2 will be coordinated with the phase 1 improvements for Segment 3 that will be presented to the public in the future.

Depending on funding, the second phase of construction may not begin for 5 years or more after the first phase is complete. The ultimate improvements are being constructed in phases to increase capacity and improve traffic flow as soon as possible.





Right of Way Process

The Iowa DOT's policy provides for appraisal of property and/or property rights needed for each project. These appraisals use professional techniques and methods to determine "just compensation" in accordance with Federal and State constitutions, laws and regulations. The appraisals are prepared to assure fair treatment for both the property owner and the public.

After the appraisals are completed, each owner is contacted by a right of way agent for the purpose of explaining the plans and appraisals and for contracting the required right of way. In instances where an agreement cannot be reached through negotiations, the property may be acquired by the laws of eminent domain.

Questions or problems concerning the right of way process should be directed to the Office of Right of Way, Iowa DOT, 800 Lincoln Way, Ames, Iowa, 50010.

Contact Us



John Carns
Iowa Department of Transportation
District 4 Office
2210 East 7th St.
Atlantic, IA 50022
Ph. 712-243-3355
Iowa Toll Free Ph. 800-289-4368
e-mail: cbinterstate@dot.iowa.gov

www.iowadot.gov/cbinterstate

For project information visit the website at www.iowadot.gov/cbinterstate.



- [▶ CBIS Home](#)
- [▶ Construction](#)
- [▶ Project Overview](#)
- [▶ Public Involvement](#)
- [▶ Environmental Studies](#)
- [▶ Design](#)
- [▶ Property Acquisition](#)
 - [▶ About Property Acquisition](#)
 - [▶ Relocation Assistance](#)
 - [▶ Corridor Preservation Zone](#)
- [▶ Español](#)
- [▶ FAQ](#)
- [▶ Definitions](#)
- [▶ Contact Us](#)

Council Bluffs Interstate System

Property Acquisition

As part of the proposed improvements, additional right-of-way may be required. The following paragraphs provide information regarding the right-of-way process followed by the Iowa Department of Transportation (Iowa DOT). Please keep in mind that specific right-of-way needs have not been identified at this time.

Iowa DOT policy provides for appraisal of property and/or property rights needed for each project. Professional techniques and methods are used to determine "just compensation" in accordance with federal and state constitutions, laws and regulations. Appraisals are prepared to assure fair treatment for both the property owner and the public.

After completing the appraisal, a right-of-way agent contacts each owner to explain the plans and appraisals and negotiate the contract for the required right-of-way. If an agreement cannot be reached through negotiations, the property may be acquired by the laws of eminent domain.

Several brochures are available on the Iowa Department of Transportation's (Iowa DOT) Office of Right-of-Way Web site, click on a link below to view them.

- [Highways and Your Land](#)
- [Relocation Assistance and Advisory Services](#)
- [You and the Property Management Section](#)

[For more information please visit the Iowa DOT's Office of Right-of-Way Web site.](#)

Federal and state laws prohibit employment and/or public accommodation discrimination on the basis of age, color, creed, disability, gender identity, national origin, pregnancy, race, religion, sex, sexual orientation or veteran's status. If you believe you have been discriminated against, please contact the Iowa Civil Rights Commission at 800-457-4416 or Iowa Department of Transportation's affirmative action officer. If you need accommodations because of a disability to access the Iowa Department of Transportation's services, contact the agency's affirmative action officer at 800-262-0003.



CBIS Improvements Project

C/O John Carns
Iowa DOT, District 4
2210 East 7th St.
Atlantic, IA 50022