

Welcome!

In 2016, the Council Bluffs Interstate System Improvement Program will continue making progress on reconstruction of I-80, I-29 and I-480 in the Council Bluffs/Omaha metropolitan area. Construction will potentially impact your travel, as well as local businesses at interchanges that will be under construction. The purpose of today's meeting is to provide an update on the Program, discuss 2016 construction projects, provide details on potential construction impacts and detours in the area, and provide an update on the I-29/I-480/West Broadway Interchange, including alternatives developed to date.

PROGRAM OVERVIEW

Iowa DOT is in the process of reconstructing I-80, I-29 and I-480 in the Council Bluffs/Omaha metropolitan area. This comprehensive interstate redesign, known as the Council Bluffs Interstate System Improvement Program, will modernize the highway system and improve mobility and safety in the area.

PROGRAM GOALS



Modernizing 18 miles of interstate



Accommodating planned developments along the corridors



Reducing traffic congestion



Improving the visual landscape in the area

PROGRAM PROGRESS



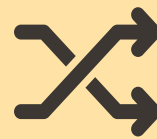
BRIDGES

Total Planned

32

Completed To-Date

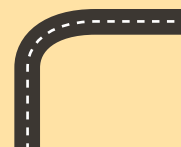
7



INTERCHANGES

15

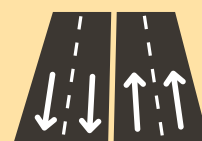
1



INTERSTATE
(miles)

18

3

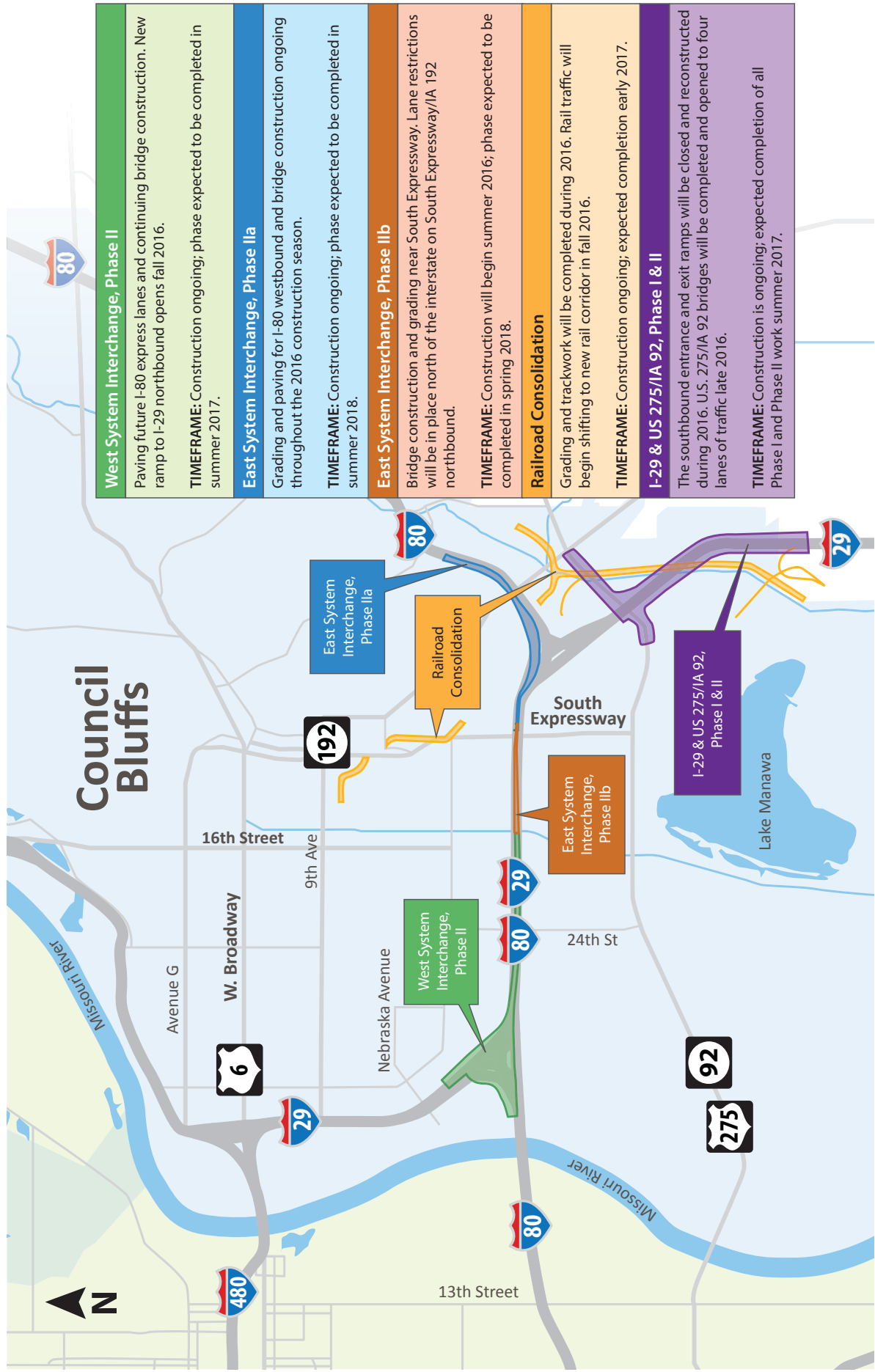


HIGHWAY
(lane miles)

135

36

2016 CONSTRUCTION PROJECTS



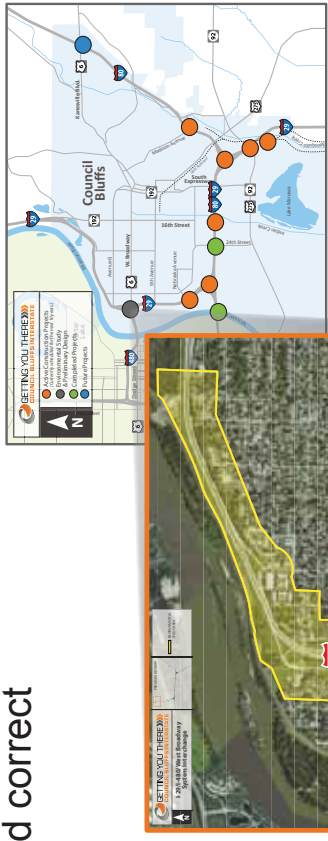
West System Interchange, Phase II
Paving future I-80 express lanes and continuing bridge construction. New ramp to I-29 northbound opens fall 2016.
TIMEFRAME: Construction ongoing; phase expected to be completed in summer 2017.
East System Interchange, Phase IIa
Grading and paving for I-80 westbound and bridge construction ongoing throughout the 2016 construction season.
TIMEFRAME: Construction ongoing; phase expected to be completed in summer 2018.
East System Interchange, Phase IIb
Bridge construction and grading near South Expressway. Lane restrictions will be in place north of the interstate on South Expressway/IA 192 northbound.
TIMEFRAME: Construction will begin summer 2016; phase expected to be completed in spring 2018.
Railroad Consolidation
Grading and trackwork will be completed during 2016. Rail traffic will begin shifting to new rail corridor in fall 2016.
TIMEFRAME: Construction ongoing; expected completion early 2017.
I-29 & US 275/IA 92, Phase I & II
The southbound entrance and exit ramps will be closed and reconstructed during 2016. U.S. 275/IA 92 bridges will be completed and opened to four lanes of traffic late 2016.
TIMEFRAME: Construction is ongoing; expected completion of all Phase I and Phase II work summer 2017.

I-29/I-480/WEST BROADWAY SYSTEM INTERCHANGE PROJECT SPOTLIGHT

Reconstruction will address capacity needs, improve safety, and correct functional design issues.

Currently conducting environmental studies and conceptual design to identify a single preferred alternative. Funding sources and a construction schedule have not been determined.

Project Development Milestones	2016	2017	2018	2019	2020
Environmental Studies	🏠	▶▶▶			
Interim Project: Construction		🏠	▶▶▶		
Project Design		🏠	▶▶▶		
Right-of-Way Acquisition			🏠	▶▶▶	
Anticipated Construction Start				🏠	🏠



BENSON ST / AVE D TO NORTH 38TH ST / AVE B

INTERIM IMPROVEMENTS

- ▶▶ Extend Benson St from Ave D to the intersection of North 38th St/Ave B
- ▶▶ Connect Avenue C to Benson St extension

I-29/I-480/WEST BROADWAY SYSTEM INTERCHANGE DESIGN CONCEPTS



- » Fully directional system interchange between I-29 and I-480
- » Combined interchange between 9th Ave, 2nd Ave, West Broadway, and Ave G, providing direct access (via one-way frontage roads) between West Broadway and I-29
- » Access between 9th Ave and I-480 provided by one-way frontage roads and West Broadway
- » Interchange at 40th St with direct access to I-480 and West Broadway
- » No interchange access provided at 35th St



- » Fully directional system interchange between I-29 and I-480
- » Combined interchange between 9th Ave, 2nd Ave, and West Broadway, providing direct access (via one-way frontage roads) between West Broadway and I-29 to and from the south. Direct ramps are provided between West Broadway and I-29 to and from the north.
- » Interchange at 40th St with direct access to I-480 and West Broadway
- » Direct access between I-480 and 9th Ave
- » No interchange access provided at Ave G or 35th St

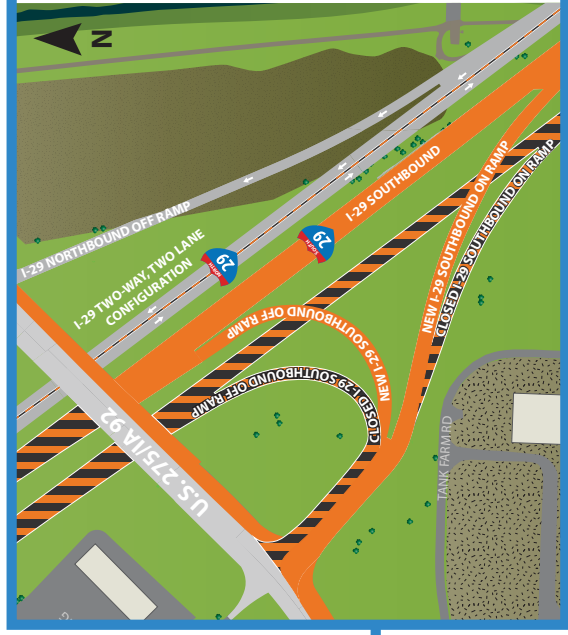


I-29 AND U.S. 275/IOWA 92 INTERCHANGE

2016 CONSTRUCTION AND TRAFFIC MOVEMENTS



- » In late spring 2016, I-29 southbound traffic will be routed in a two-way, two lane configuration with northbound traffic.
- » The I-29 southbound on-ramp at U.S. 275/Iowa 92 will close at that time until late fall.
- » I-80 westbound to I-29 southbound traffic wanting to exit at U.S. 275/Iowa 92 will need to follow the detour beginning late spring 2016.



- » In early fall 2016, the U.S. 275/Iowa 92 southbound off-ramp will be closed for approximately three months for reconstruction.
- » By the end of 2016, I-29 southbound traffic will be shifted to the new permanent pavement. The off-ramp will reopen and traffic on U.S. 275/Iowa 92 will open to two lanes in each direction.

Access from U.S. 275/Iowa 92 to Metro Crossing will remain open.



SIGN UP FOR TRAFFIC ALERTS

Getting you there... plan ahead... avoid the traffic!

Iowa DOT's 511 Information System allows you to receive real time traffic updates:

- » 511 is on social media
- » Sign up for personalized text or email alerts at www.511ia.org
- » Download the mobile app
- » Sign up for 511 alerts at today's meeting



WORK ZONE SAFETY

Expect the unexpected!

Almost every day a work zone accident occurs in the state of Iowa. Please help keep our work zones safe by exercising these guidelines when traveling:

- » Slow down
- » Stay alert
- » Obey the signs
- » Keep your distance
- » Pay attention

STAY INFORMED

Visit the Program website:

www.CouncilBluffsInterstate.IowaDOT.gov

Follow us on Social Media:



Visit the Program office:

Mall of the Bluffs
1751 Madison Avenue, Suite 750
Council Bluffs, IA 51503

Email Us: info@CouncilBluffsInterstate.com

Call Us: 712.326.3712



1751 Madison Avenue, Suite 750 • Council Bluffs, IA 51503 • 712.216.3712
www.CouncilBluffsInterstate.IowaDOT.gov • info@CouncilBluffsInterstate.com

WHAT TO EXPECT DURING CONSTRUCTION



Noise



Vibration



Dust



Large equipment and materials



Increase truck traffic/hauling operations



Traffic impacts



Lane shifts



Lane closures and overnight interstate closures

Federal and state laws prohibit employment and/or public accommodation discrimination on the basis of age, color, creed, disability, gender identity, national origin, pregnancy, race, religion, sex, sexual orientation, or veteran's status. If you believe you have been discriminated against, please contact the Iowa Civil Rights Commission at 800-457-4416 or Iowa Department of Transportation's affirmative action officer. If you need accommodations because of a disability to access the Iowa Department of Transportation's services, contact the agency's affirmative action officer at 800-262-0003.